

HARLEQUIN

ZAMORA

DIGITAL DESIGN BOOK





HARLEQUIN

ZAMORA

ZAMORA FABRIC & WALLPAPER SS26

Zamora is a brand-new collection of fabric and wallpaper for SS26, celebrating world craft, colour, and the expressive interpretation of nature in design.

This luxurious collection of fabrics explores a fusion of global cultures, including embroideries and woven fabrics, demonstrating various weaving techniques. From Indian Kantha embroidery to Mexican tapestry weaving, Harlequin combines a fusion of globally inspired patterns for a uniquely special decorative story that uplifts interiors.

Mixing archival pieces and modern artistic paintings, Zamora tells a range of design stories within the contemporary interior, fulfilling our deep passion for bringing the outside world in. Traditional textile practices are honoured, while street art inspires some designs across fabric and wallpaper.

Stripes, florals, geometrics and abstract designs are featured, alongside bands of mesmerising patterns, referencing border designs discovered around the world.

Wallpapers, with a vivid, sophisticated, expressive, yet refined colour palette, echo this celebratory design statement. Brand-new designs reflect how nature is interpreted in textiles around the world, while luxurious fabrics pay homage to the intense weaving techniques and styles that inspire Harlequin as a studio.



Each design mixes a muted and elevated palette alongside this globally inspired design narrative, for a fresh new collection. These bespoke colours mix old and new worlds, elevating the collection and amplifying the techniques and qualities on display.

Flora Daly, Lead Designer at Harlequin, says, "Fresh, editorial and shining a spotlight on artistry and creative expression, Zamora is a global blend of so many of the styles and influences that Harlequin loves as a design studio. Traditional weaving techniques are explored in fabrics and wallpapers, with a contemporary vision. Digital printing brings the eclectic look to life in vivid colour, for a collection that is vibrant yet sophisticated in application. We're celebrating craftsmanship through a stylised lens with these modern interpretations for modern living."

Embrace modern interpretations of global styles this SS26 with Zamora.

ALL DESIGNS ARE CREATED IN THE HARLEQUIN DESIGN STUDIO. ALL PRINTED FABRIC AND WALLPAPER IS PRODUCED AT THE BRAND'S HISTORIC UK FACTORIES IN LOUGHBOROUGH AND LANCASTER.



BRAND STORY

EXPRESSIVE DESIGNS AND CURATED PALETTES
THROUGH LUXURY FABRIC AND WALLPAPER.

Harlequin is a contemporary brand of creative integrity known for designing and making versatile, sophisticated, and expressive fabric and wallpaper. As a studio, Harlequin embraces an eclectic sense of style in interiors and empowers people to express their individuality through colour and design in their homes.

Founded in the 1960s, Harlequin's portfolio is a varied and exciting mix of techniques, artistic styles, and textures, culminating in a library of beautiful, transitional designs. Taking inspiration from contemporary art and global influences, richly layered designs are revealed, providing endless inspiration for modern-day interiors that revel in self-expression.

With a refined approach to palette curation, the design team considers every shade and tone, hand-drawing and painting each design as an artwork before transforming them into highly textured fabrics and luxurious wallpapers that ignite the senses.

Our intuition for how people desire to live drives the team to create visionary designs as a creative outlet for design expression at home.

From a considered yet versatile library of hues to exceptional techniques and finishes in products, our designs bring energy to interiors, building an artwork archive for the future. Harlequin is committed to embracing individuality in design, bringing originality and beauty to the design table.





FABRICS



ANIA

This cross-stitch-style all-over embroidery has a rhythmic patterning. A contemporary design, Ania is an abstract take on a floral.

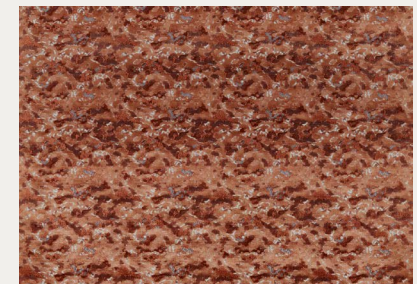
GOES WITH



ANIA 134782



SALTILLO 113370



DERAIN 134761

CLICK ON THE PRODUCT IMAGES TO DISCOVER MORE

ANIA FABRIC COLOURWAYS



134782



134783

CLICK ON THE PRODUCT IMAGES TO DISCOVER MORE

FABRIC TECHNICAL

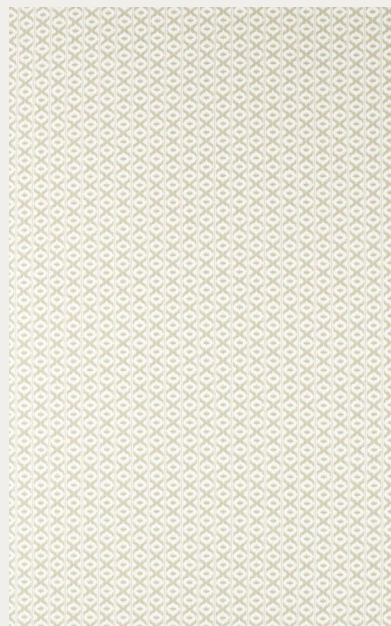
TYPE	Embroidery (Machine)
COMPOSITION	50% Cotton 50% Polyester
WIDTH	126.5cm/49.8in
REPEAT	39cm/15.4in
PATTERN MATCH	Straight
DOMESTIC USAGE	Curtains, Blinds, Cushions
CONTRACT USAGE	Curtains



AJAL

A simple yet effective coordinate, Ajal features a soft stripe with a modern ogee. The fabric is reversible depending on preference and comes in three soft colourways.

GOES WITH



AJAL 134856



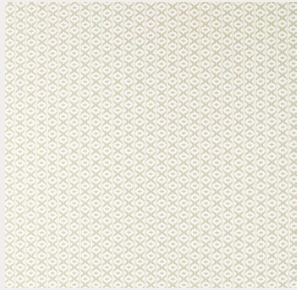
ZENITH 113358



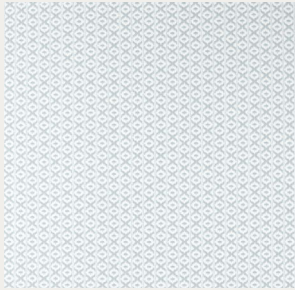
CEIBA 121337

CLICK ON THE PRODUCT IMAGES TO DISCOVER MORE

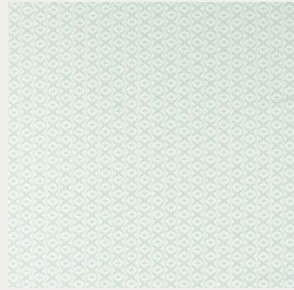
AJAL FABRIC COLOURWAYS



134856



134857



134858

[CLICK ON THE PRODUCT IMAGES TO DISCOVER MORE](#)

AJAL FABRIC TECHNICAL

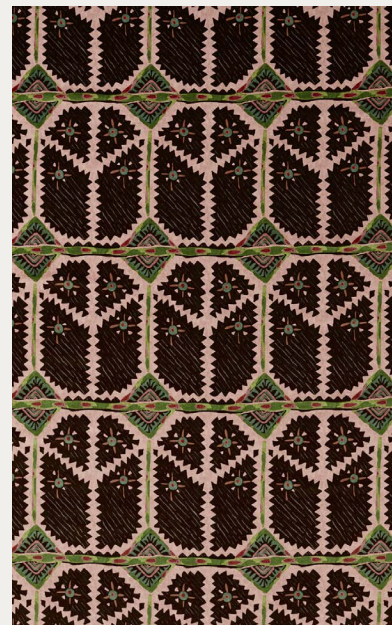
TYPE	Woven Fabric
COMPOSITION	51% Recycled Polyester 38% Cotton 11% Polyester
WIDTH	140cm/55.1in
REPEAT	5cm/2in
PATTERN MATCH	Straight
DOMESTIC USAGE	Upholstery, Drapes, Blinds, Cushions
CONTRACT USAGE	Curtains



BROCHA

Taken from the archive, this cotton velvet design references traditional patterning in Mexican street art. Expressive and bold, Brocha comes in two colourways that feel distinctly Harlequin. A matching wallpaper is available.

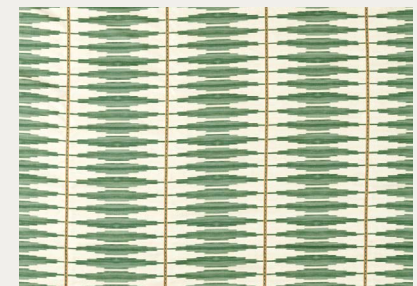
GOES WITH



BROCHA 121346



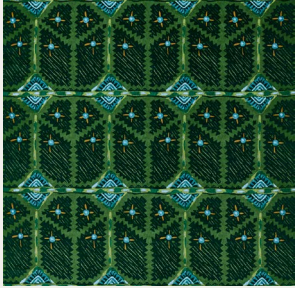
BROCHA 113361



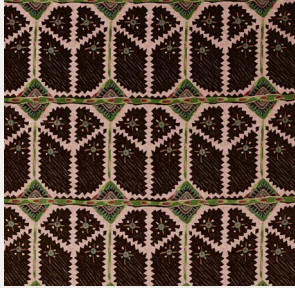
CINTILLA 134855

[CLICK ON THE PRODUCT IMAGES TO DISCOVER MORE](#)

BROCHA FABRIC COLOURWAYS



121345



121346

CLICK ON THE PRODUCT IMAGES TO DISCOVER MORE

FABRIC TECHNICAL

TYPE	Printed Velvet
COMPOSITION	83% Cotton 17% Polyester
WIDTH	130.5cm/51.4in
REPEAT	43cm/16.93in
PATTERN MATCH	Straight
DOMESTIC USAGE	Upholstery, Drapes, Blinds, Cushions
CONTRACT USAGE	Drapes

BROCHA WALLPAPER COLOURWAYS



113361



113362



113363

CLICK ON THE PRODUCT IMAGES TO DISCOVER MORE

WALLPAPER TECHNICAL

TYPE	NW Wallpaper 52cm
COMPOSITION	Digital Print Wallpaper
WIDTH	52cm/20.5in
REPEAT	67.6cm/26.61in
PATTERN MATCH	Straight Match



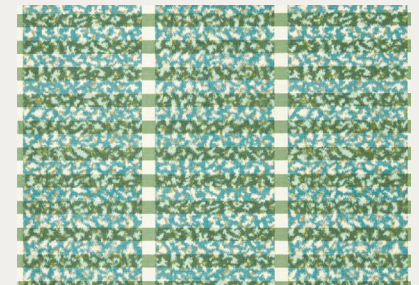
CEIBA

Named after the Ceiba tree, this dappled leaf design is hand-painted in the studio and features a watercolour technique for a soft wash of colour. Also available as a wallpaper.

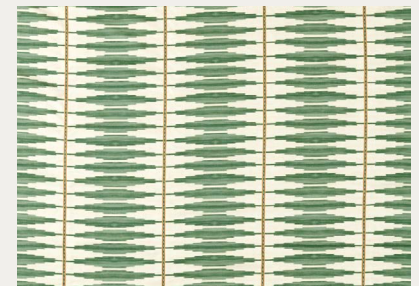
GOES WITH



CEIBA | 21337



TOLUCA | 13353



CINTILLA | 134855

CLICK ON THE PRODUCT IMAGES TO DISCOVER MORE

CEIBA FABRIC COLOURWAYS



121337



121338



121339

CLICK ON THE PRODUCT IMAGES TO DISCOVER MORE

FABRIC TECHNICAL

TYPE	Printed Fabric
COMPOSITION	93% Cotton 7% Linen
WIDTH	140cm/55.11in
REPEAT	74cm/29.13in
PATTERN MATCH	Straight
DOMESTIC USAGE	Upholstery, Drapes, Blinds, Cushions
CONTRACT USAGE	Curtains

CEIBA WALLPAPER COLOURWAYS



113342



113343



113344

CLICK ON THE PRODUCT IMAGES TO DISCOVER MORE

WALLPAPER TECHNICAL

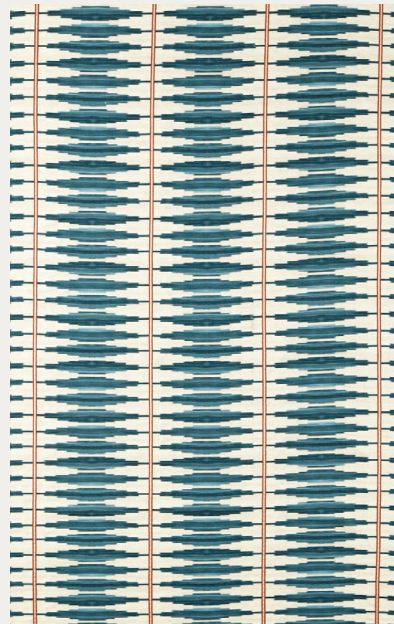
TYPE	WW Non Woven Wallpaper 68.6cm
COMPOSITION	Digital Printed Wallpaper Wide Width
WIDTH	68.6cm/27in
REPEAT	74.9cm/29.49in
PATTERN MATCH	Straight Match



CINTILLA

Cintilla is a mesmerising printed and embroidered stripe. This simple ikat is punctuated with an embroidered stitch stripe for texture and effect. Available in four colourways.

GOES WITH



CINTILLA 134852



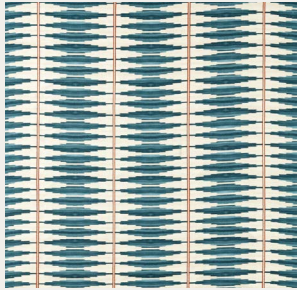
SPIRALIS 113364



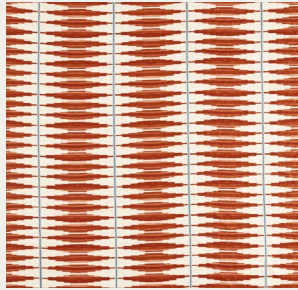
KANAGAWA 134771

CLICK ON THE PRODUCT IMAGES TO DISCOVER MORE

CINTILLA FABRIC COLOURWAYS



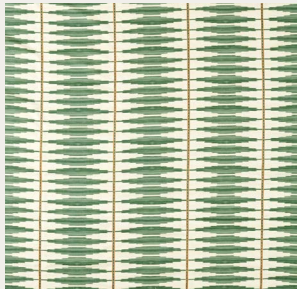
134852



134853



134854



134855

CLICK ON THE PRODUCT IMAGES TO DISCOVER MORE

FABRIC TECHNICAL

TYPE	Woven Fabric
COMPOSITION	51% Cotton 36% Viscose 13% Linen
WIDTH	135.5cm/53.3in
REPEAT	28cm/11in
PATTERN MATCH	Straight
DOMESTIC USAGE	Curtains, Blinds, Cushions
CONTRACT USAGE	Curtains



ELOTA

A design taken from the archive, Elota has been woven on a jacquard loom. This rich ikat design originates from the family of flame stitch patterns, notable for its zig-zag. Fusing history and modern textile engineering, Elota is a bold and eye-catching design. Floating yarns and a soft sheen in two rich colourways add depth to this special design.

GOES WITH



ELOTA 134772



SALTILLO 113369



KANTHA 134779

CLICK ON THE PRODUCT IMAGES TO DISCOVER MORE

ELOTA FABRIC COLOURWAYS



134772



134773

CLICK ON THE PRODUCT IMAGES TO DISCOVER MORE

FABRIC TECHNICAL

TYPE	Woven Fabric
COMPOSITION	58% Viscose 24% Cotton 18% Polyester
WIDTH	139cm/54.7in
REPEAT	48.5cm/19.1in
PATTERN MATCH	Straight
DOMESTIC USAGE	Upholstery, Drapes, Blinds, Cushions
CONTRACT USAGE	Curtains



INDIENNE

Taken from the archive, Indienne is a beautiful chintz that has been repainted in the Harlequin studio to give it a contemporary feel. Indienne flowers blossom in four colourways across our printed fabric, also as a panelled wallpaper.

GOES WITH



INDIENNE 121340



TOLUCA 113354



KALEIDO 134785

CLICK ON THE PRODUCT IMAGES TO DISCOVER MORE

INDIENNE FABRIC COLOURWAYS



121340



121341



121342



121343

CLICK ON THE PRODUCT IMAGES TO DISCOVER MORE

FABRIC TECHNICAL

TYPE	Printed Fabric
COMPOSITION	93% Cotton 7% Linen
WIDTH	140cm/55.1in
REPEAT	76cm/29.9in
PATTERN MATCH	Half Drop
DOMESTIC USAGE	Upholstery, Drapes, Blinds, Cushions
CONTRACT USAGE	Curtains

INDIENNE WALLPAPER COLOURWAYS



113372



113373



113374



113375



113376

CLICK ON THE PRODUCT IMAGES TO DISCOVER MORE

WALLPAPER TECHNICAL

TYPE	Mural on a roll
COMPOSITION	Digital Printed Wallpaper Wide Width
WIDTH	68.6cm/27in
REPEAT	300cm/118.11in
PATTERN MATCH	Straight Match



KALEIDO

A crewel stitch reveals a zig-zag stripe in a sophisticated way, referencing border designs discovered during the studio's exploration of inspiration for the Zamora collection. Three colourways are available.

GOES WITH



KALEIDO 134785



SPIRALIS 113364



ELOTA 134773

CLICK ON THE PRODUCT IMAGES TO DISCOVER MORE

KALEIDO FABRIC COLOURWAYS



134784



134785



134793

CLICK ON THE PRODUCT IMAGES TO DISCOVER MORE

FABRIC TECHNICAL

TYPE	Embroidery (Machine)
COMPOSITION	40% Cotton 37% Polyester 20% Acrylic 3% Viscose
WIDTH	129cm/50.8in
REPEAT	57.5cm/22.6in
PATTERN MATCH	Straight
DOMESTIC USAGE	Drapes, Blinds, Cushions
CONTRACT USAGE	Curtains



KANTHA

A beautiful embroidery, Kantha is a recognisable type of Indian embroidery, a blanket-stitch fabric with embroidery on top. This traditional design tells the story of elephants, tigers, fish, peacocks and other elegant birds.

GOES WITH



KANTHA 134779



TOLUCA 113354



ELOTA 134772

CLICK ON THE PRODUCT IMAGES TO DISCOVER MORE

KANTHA FABRIC COLOURWAYS



134779



134780



134781

CLICK ON THE PRODUCT IMAGES TO DISCOVER MORE

FABRIC TECHNICAL

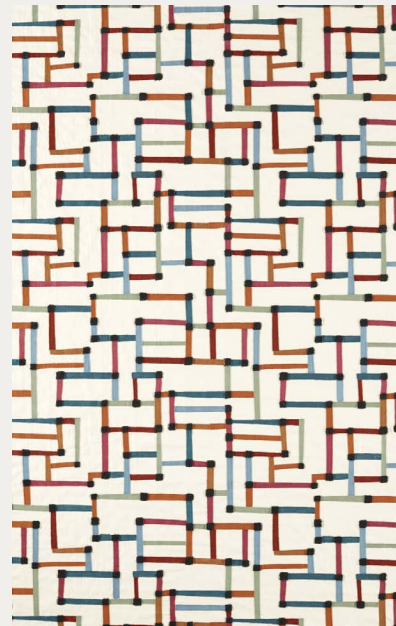
TYPE	Embroidery (Machine)
COMPOSITION	62% Cotton 38% Polyester
WIDTH	134cm/52.8in
REPEAT	23cm/9.1in
PATTERN MATCH	Straight
DOMESTIC USAGE	Drapes, Blinds, Cushions
CONTRACT USAGE	Curtains



LINEAS

Lineas is a crewel stitch on a 100% cotton ground. The embellished, textural style creates an all-over geometric pattern, which embraces a weave in its maze-like design to include an array of colours on a simple ground.

GOES WITH



LINEAS 134786



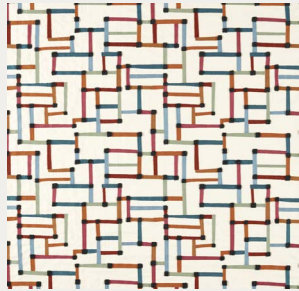
SALTILLO 113370



KANAGAWA 134771

CLICK ON THE PRODUCT IMAGES TO DISCOVER MORE

LINEAS FABRIC COLOURWAYS



134786



134787

CLICK ON THE PRODUCT IMAGES TO DISCOVER MORE

FABRIC TECHNICAL

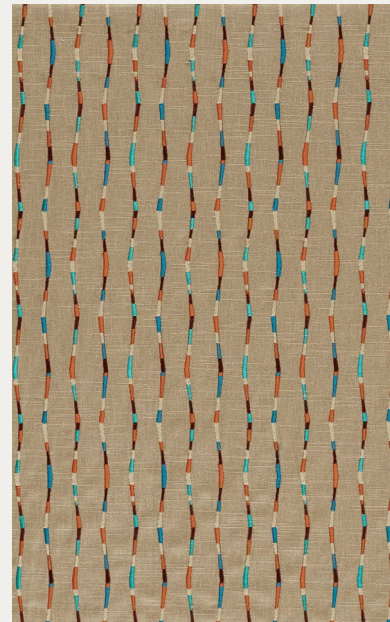
TYPE	Embroidery (Machine)
COMPOSITION	48% Cotton 42% Acrylic 10% Polyester
WIDTH	132cm/52in
REPEAT	58cm/22.8in
PATTERN MATCH	Straight
DOMESTIC USAGE	Upholstery, Drapes, Blinds, Cushions
CONTRACT USAGE	Curtains



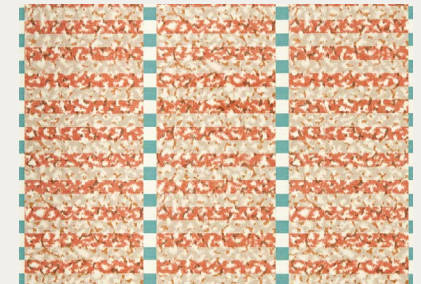
MORELIA

A simple yet effective hand-stitched, folk-inspired stripe, Morelia features a wiggling corded thread design and gathers beautifully as a drapery fabric.

GOES WITH



MORELIA | 134774



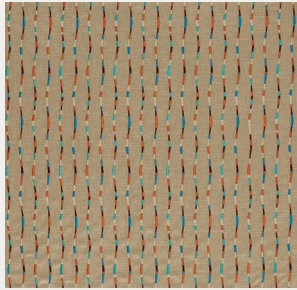
TOLUCA | 13352



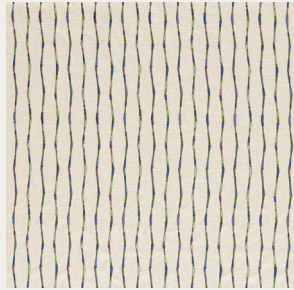
ZAMORA | 134792

CLICK ON THE PRODUCT IMAGES TO DISCOVER MORE

MORELIA FABRIC COLOURWAYS



134774



134775

CLICK ON THE PRODUCT IMAGES TO DISCOVER MORE

FABRIC TECHNICAL

TYPE	Embroidery (Machine)
COMPOSITION	55% Cotton 25% Polyester 20% Viscose
WIDTH	130cm/51.2in
REPEAT	23cm/9.1in
PATTERN MATCH	Straight
DOMESTIC USAGE	Upholstery, Drapes, Blinds, Cushions
CONTRACT USAGE	Curtains



PINTURA

Taken from the wallpaper panel design inspired by the 20th-century art movement of Fauvism, three primary colours are highlighted with embroidery for the fabric interpretation.

GOES WITH



PINTURA 134794



PINTURA 113371



DERAIN 134760

CLICK ON THE PRODUCT IMAGES TO DISCOVER MORE

PINTURA FABRIC COLOURWAYS



134794

[CLICK ON THE PRODUCT IMAGES TO DISCOVER MORE](#)

FABRIC TECHNICAL

TYPE	Embroidery (Machine)
COMPOSITION	89% Polyester 11% Acrylic
WIDTH	146cm/57.5in
REPEAT	106cm/41.7in
PATTERN MATCH	Straight
DOMESTIC USAGE	Drapes, Blinds, Cushions
CONTRACT USAGE	Drapes, Blinds, Cushions

PINTURA WALLPAPER COLOURWAYS



113371

CLICK ON THE PRODUCT IMAGES TO DISCOVER MORE

WALLPAPER TECHNICAL

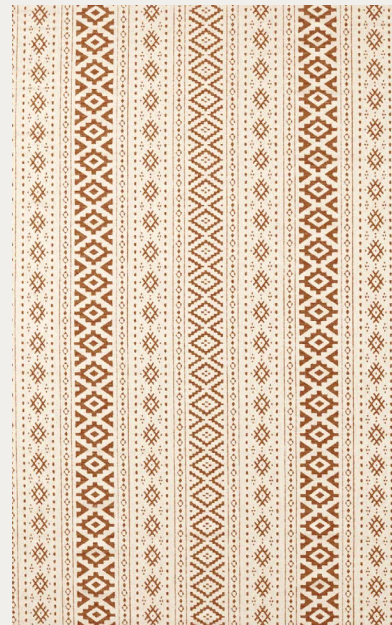
TYPE	Wide Width Vinyl 68.6cm
COMPOSITION	Digital Printed Wide Width Vinyl
WIDTH	68.6cm/27in
REPEAT	300cm/118.11in
PATTERN MATCH	Straight Match



REBOZO

This large-scale jacquard weave is taken from a kilim rug tapestry. The expert spacing of the pattern creates a wonderfully structured design in a dual-purpose fabric, making it highly versatile in interiors.

GOES WITH



REBOZO 134790



KUPARR 113356



KANAGAWA 134771

CLICK ON THE PRODUCT IMAGES TO DISCOVER MORE

REBOZO FABRIC COLOURWAYS



134790



134791

CLICK ON THE PRODUCT IMAGES TO DISCOVER MORE

FABRIC TECHNICAL

TYPE	Woven Fabric
COMPOSITION	27% Viscose 22% Polyester 18% Linen 16% Cotton 15% Wool 2% Acrylic
WIDTH	143cm/56.3in
REPEAT	10cm/3.9in
PATTERN MATCH	Straight
DOMESTIC USAGE	Upholstery, Drapes, Blinds, Cushions
CONTRACT USAGE	Curtains



ZAMORA

A classic, Jacobean-style embroidery, Zamora is modern and stylised in its design and colour, featuring large, leafy Jacobean heads embroidered onto a cotton-linen ground. A matching wallpaper is also available.

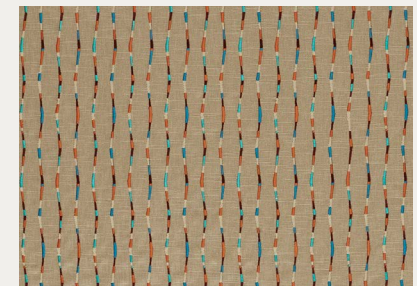
GOES WITH



ZAMORA 134777



TOLUCA 113354



MORELIA 134774

CLICK ON THE PRODUCT IMAGES TO DISCOVER MORE

ZAMORA FABRIC COLOURWAYS



134776



134777



134778



134792

CLICK ON THE PRODUCT IMAGES TO DISCOVER MORE

FABRIC TECHNICAL

TYPE	Embroidery (Machine)
COMPOSITION	43% Polyester 30% Cotton 27% Linen
WIDTH	136cm/53.5in
REPEAT	38cm/15in
PATTERN MATCH	Straight
DOMESTIC USAGE	Drapes, Blinds, Cushions
CONTRACT USAGE	Curtains

ZAMORA WALLPAPER COLOURWAYS



113365



113366



113367



113368

CLICK ON THE PRODUCT IMAGES TO DISCOVER MORE

WALLPAPER TECHNICAL

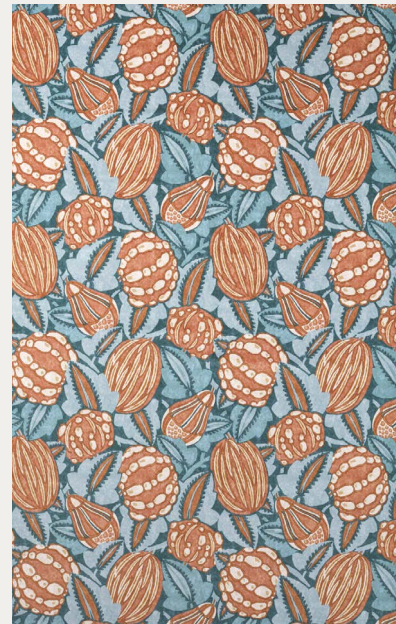
TYPE	WW Non Woven Wallpaper 68.6cm
COMPOSITION	Digital Printed Wallpaper Wide Width
WIDTH	68.6cm/27in
REPEAT	84.9cm/33.43in
PATTERN MATCH	Straight Match



ZENITH

Taken from the archive, Zenith has a strong global influence in its design. Produced on cotton velvet, exotic fruits such as cacao beans feature in a beautiful overlapping style. A matching wallpaper is also available.

GOES WITH



ZENITH 121347



ZENITH 113360



ZAMORA 134777

CLICK ON THE PRODUCT IMAGES TO DISCOVER MORE

ZENITH FABRIC COLOURWAYS



121347



121348

CLICK ON THE PRODUCT IMAGES TO DISCOVER MORE

FABRIC TECHNICAL

TYPE	Printed Velvet
COMPOSITION	83% Cotton 17% Polyester
WIDTH	133.5cm/52.6in
REPEAT	67cm/26.4in
PATTERN MATCH	Straight
DOMESTIC USAGE	Upholstery, Drapes, Blinds, Cushions
CONTRACT USAGE	Curtains

ZENITH WALLPAPER COLOURWAYS



113358



113359



113360

CLICK ON THE PRODUCT IMAGES TO DISCOVER MORE

WALLPAPER TECHNICAL

TYPE	WW Non Woven Wallpaper 68.6cm
COMPOSITION	Digital Printed Wallpaper Wide Width
WIDTH	68.6cm/27in
REPEAT	67.6cm/26.61in
PATTERN MATCH	Straight Match



WALLPAPER



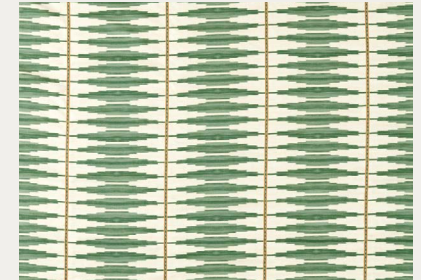
PAISLEY

A contemporary take on a paisley from our studio, the motifs from an archive paper design have a Mexican influence. Available in three colourways.

GOES WITH



PAISLEY 113345



CINTILLA 134855



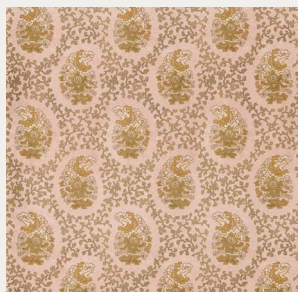
ZAMORA 134777

CLICK ON THE PRODUCT IMAGES TO DISCOVER MORE

PAISLEY WALLPAPER COLOURWAYS



113345



113346



113347

CLICK ON THE PRODUCT IMAGES TO DISCOVER MORE

WALLPAPER TECHNICAL

TYPE	NW Wallpaper 52cm
COMPOSITION	Digital Print Wallpaper
WIDTH	52cm/20.5in
REPEAT	37.8cm/14.88in
PATTERN MATCH	Straight



SALTILLO

This desert scene draws inspiration from Mexican landscapes. Cacti and other succulents, native plants to the dry land, appear abstractly, painted in watercolour for a soft, layered scene that represents day and night in two colourways. A mica ground gives a subtle sheen.

GOES WITH



SALTILLO | 13369



KUPARR | 134765



DERAIN | 134763

CLICK ON THE PRODUCT IMAGES TO DISCOVER MORE

SALTILLO WALLPAPER COLOURWAYS



113369



113370

[CLICK ON THE PRODUCT IMAGES TO DISCOVER MORE](#)

WALLPAPER TECHNICAL

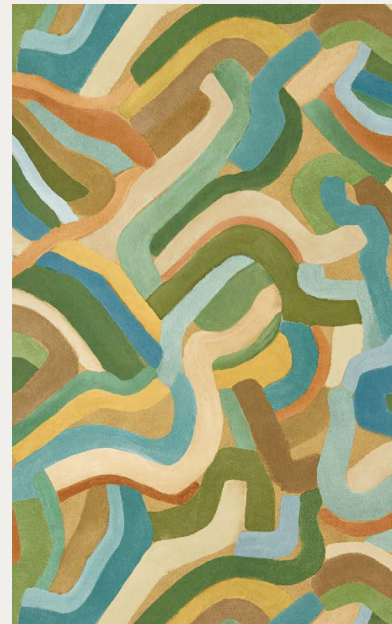
TYPE	WW Non Woven Wallpaper 68.6cm
COMPOSITION	Digital Printed Wallpaper Wide Width
WIDTH	68.6cm/27in
REPEAT	300cm/118.11in
PATTERN MATCH	Straight Match



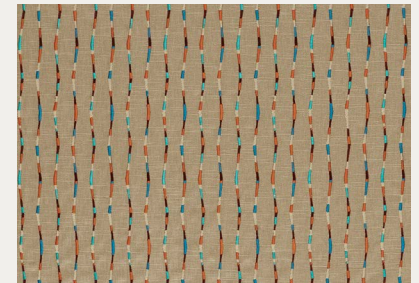
SPIRALIS

Developed from original artwork painted in the studio onto faux suede for a mottled effect, Spiralis is bold in its earthy palette.

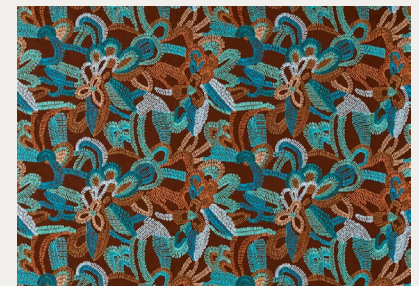
GOES WITH



SPIRALIS 113364



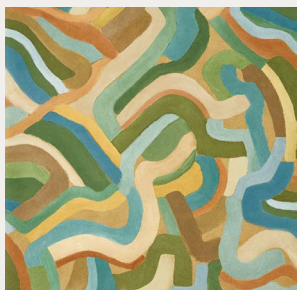
MORELIA 134774



ANIA 134782

CLICK ON THE PRODUCT IMAGES TO DISCOVER MORE

SPIRALIS WALLPAPER COLOURWAYS



113364

[CLICK ON THE PRODUCT IMAGES TO DISCOVER MORE](#)

WALLPAPER TECHNICAL

TYPE	WW Non Woven Wallpaper 68.6cm
COMPOSITION	Digital Printed Wallpaper Wide Width
WIDTH	68.6cm/27in
REPEAT	82.1cm/32.321in
PATTERN MATCH	Offset



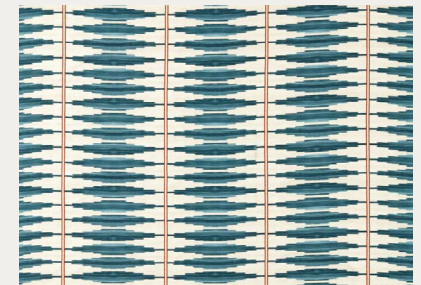
TIDAM

Tidam showcases a small mark-making extracted from a section of our Brocha design, creating a subtle, dainty coordinate within the Zamora collection. These star-like motifs offer a little frivolity on a neutral background.

GOES WITH



TIDAM | 13348



CINTILLA | 134852



KUPARR | 134768

CLICK ON THE PRODUCT IMAGES TO DISCOVER MORE

TIDAM WALLPAPER COLOURWAYS



113348



113349



113350



113351

[CLICK ON THE PRODUCT IMAGES TO DISCOVER MORE](#)

WALLPAPER TECHNICAL

TYPE	WW Non Woven Wallpaper 68.6cm
COMPOSITION	Digital Printed Wallpaper Wide Width
WIDTH	52cm/20.47in
REPEAT	26cm/10.23in
PATTERN MATCH	Straight Match



TOLUCA

This design originates from a silk warp print, which has translated beautifully into a wallpaper design. An animalesque print in the background is layered with a stripe for a new interpretation of a checkerboard stripe design.

GOES WITH



TOLUCA 113354



ZENITH 121347



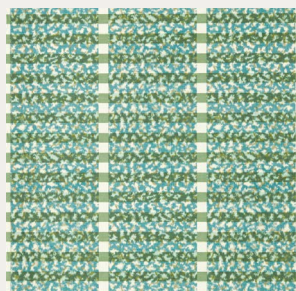
KANTHA 134779

CLICK ON THE PRODUCT IMAGES TO DISCOVER MORE

TOLUCA WALLPAPER COLOURWAYS



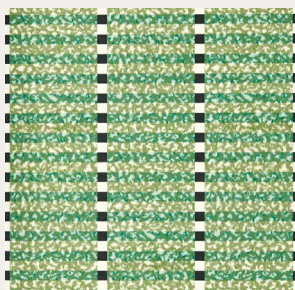
113352



113353



113354



113355

CLICK ON THE PRODUCT IMAGES TO DISCOVER MORE

WALLPAPER TECHNICAL

TYPE	WW Non Woven Wallpaper 68.6cm
COMPOSITION	Digital Print Wallpaper
WIDTH	52cm/20.5in
REPEAT	49.1cm/19.33in
PATTERN MATCH	Straight Match



UPHOLSTERY



DERAIN

Vivid in colour, the varying lengths of pile in Derain create a beautiful velvet, giving the impression of lily pads on the water in this luxurious, abstract upholstery design. Highly textured, Derain plays with the light in a perfect, small-scale velvet.

GOES WITH



DERAIN 134760



SALTILLO 113370



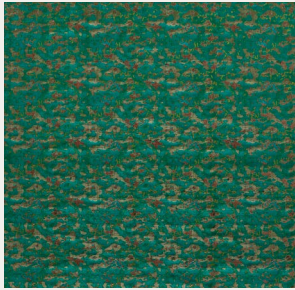
KUPARR 134765

CLICK ON THE PRODUCT IMAGES TO DISCOVER MORE

DERAIN WEAVES COLOURWAYS



134759



134760



134761



134762



134763



134764

CLICK ON THE PRODUCT IMAGES TO DISCOVER MORE

WEAVES TECHNICAL

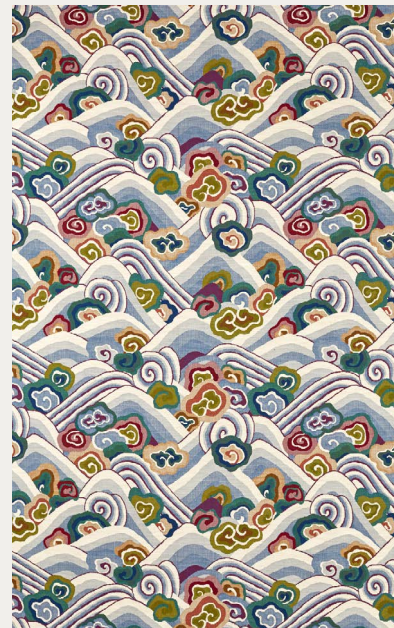
TYPE	Velvet
COMPOSITION	66% Viscose 22% Polyester 12% Cotton
WIDTH	141cm/55.5in
REPEAT	25cm/9.8in
PATTERN MATCH	Straight
DOMESTIC USAGE	Upholstery, Cushions
CONTRACT USAGE	Upholstery, Cushions



KANAGAWA

In this contemporary design, veils of clouds descend softly into the Japanese hillsides, creating a beautifully atmospheric design. Antique and classic colourways give this design an archival feel.

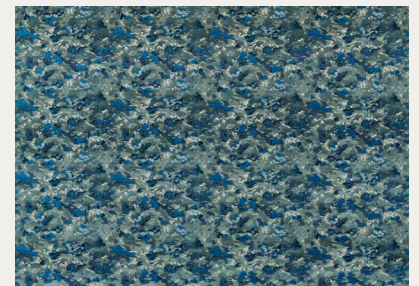
GOES WITH



KANAGAWA 134769



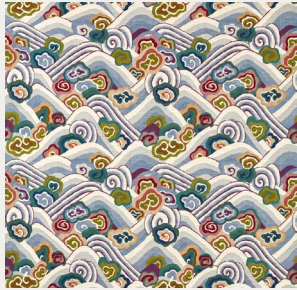
SALTILLO 113370



DERAIN 134763

CLICK ON THE PRODUCT IMAGES TO DISCOVER MORE

KANAGAWA WEAVES COLOURWAYS



134769



134770



134771

CLICK ON THE PRODUCT IMAGES TO DISCOVER MORE

WEAVES TECHNICAL

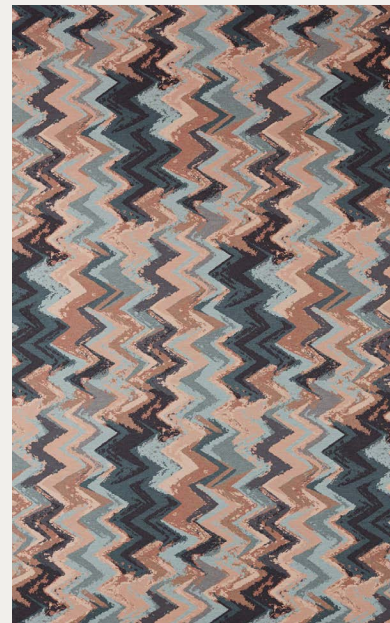
TYPE	Woven Fabric
COMPOSITION	92% Cotton 8% Linen
WIDTH	137cm/53.9in
REPEAT	65.5cm/25.8in
PATTERN MATCH	Straight
DOMESTIC USAGE	Upholstery, Drapes, Blinds, Cushions
CONTRACT USAGE	Curtains



KILLIM

This special design is inspired by a type of rug embroidery, giving it its name. Kilim is a contemporary take on the recognisable ikat style and dry handle. Playful and slightly looser than a traditional ikat, Kilim is the perfect Harlequin design. Earthy tones mix with greens and blues across three colourways.

GOES WITH



KILLIM 134756



PAISLEY 113346



ANIA 134783

CLICK ON THE PRODUCT IMAGES TO DISCOVER MORE

KILLIM WEAVES COLOURWAYS



134756



134757



134758

CLICK ON THE PRODUCT IMAGES TO DISCOVER MORE

WEAVES TECHNICAL

TYPE	Woven Fabric
COMPOSITION	60% Polyester 40% Viscose
WIDTH	142cm/55.9in
REPEAT	112cm/44.1in
PATTERN MATCH	Half Drop
DOMESTIC USAGE	Upholstery, Drapes, Blinds, Cushions
CONTRACT USAGE	Curtains



KUPARR

Kuparr is a robust tapestry weave made in a cotton-linen blend. Textural and story-telling, this style of weaving is a striking addition to the Zamora collection. Cacti, flowers, and foliage create a detailed stripe design with plenty of interest and texture. Also available in wallpaper.

GOES WITH



KUPARR 134765



SALTILLO 113369



DERAIN 134763

CLICK ON THE PRODUCT IMAGES TO DISCOVER MORE

KUPARR WEAVES COLOURWAYS



134765



134766



134767



134768

CLICK ON THE PRODUCT IMAGES TO DISCOVER MORE

WEAVES TECHNICAL

TYPE	Woven Fabric
COMPOSITION	92% Cotton 8% Linen
WIDTH	138cm/54.3in
REPEAT	78cm/30.7in
PATTERN MATCH	Straight
DOMESTIC USAGE	Upholstery, Drapes, Blinds, Cushions
CONTRACT USAGE	Curtains

KUPARR WALLPAPER COLOURWAYS



113356



113357

[CLICK ON THE PRODUCT IMAGES TO DISCOVER MORE](#)

WALLPAPER TECHNICAL

TYPE	WW Non Woven Wallpaper 68.6cm
COMPOSITION	Digital Printed Wallpaper Wide Width
WIDTH	68.6cm/27in
REPEAT	77.3cm/30.43in
PATTERN MATCH	Straight

WALLPAPER INDEX



BROCHA 113361



BROCHA 113362



BROCHA 113363



CEIBA 113342



CEIBA 113343



CEIBA 113344



INDIENNE 113372



INDIENNE 113373



INDIENNE 113374



INDIENNE 113375



INDIENNE 113376



KUPARR 113356



KUPARR 113357



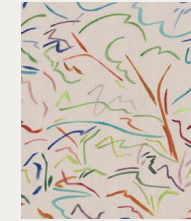
PAISLEY 113345



PAISLEY 113346



PAISLEY 113347



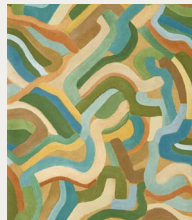
PINTURA 113371



SALTILLO 113369



SALTILLO 113370



SPIRALIS 113364



TIDAM 113348



TIDAM 113349



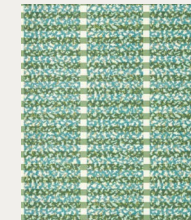
TIDAM 113350



TIDAM 113351



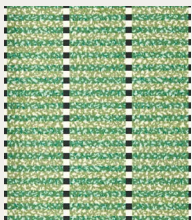
TOLUCA 113352



TOLUCA 113353



TOLUCA 113354



TOLUCA 113355



ZAMORA 113365



ZAMORA 113366



ZAMORA 113367



ZAMORA 113368



ZENITH 113358



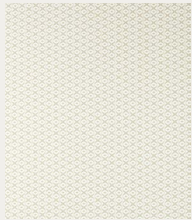
ZENITH 113359



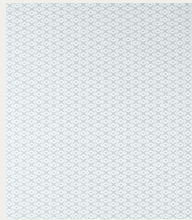
ZENITH 113360

Click on the product images to discover more.

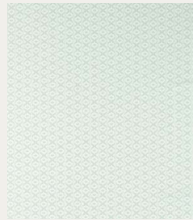
FABRIC INDEX



AJAL 134856



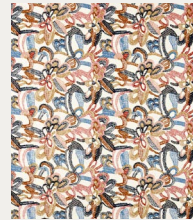
AJAL 134857



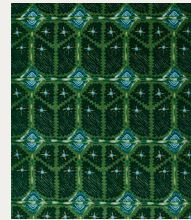
AJAL 134858



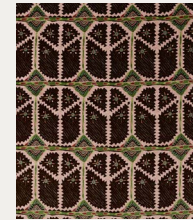
ANIA 134782



ANIA 134783



BROCHA 121345



BROCHA 121346



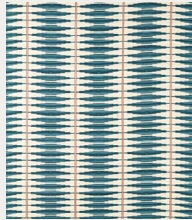
CEIBA 121337



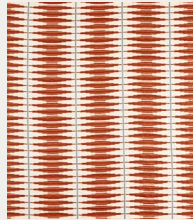
CEIBA 121338



CEIBA 121339



CINTILLA 134852



CINTILLA 134853



CINTILLA 134854



CINTILLA 134855



ELOTA 134772



ELOTA 134773



INDIENNE 121340



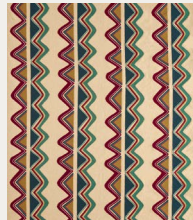
INDIENNE 121341



INDIENNE 121342



INDIENNE 121343



KALEIDO 134793



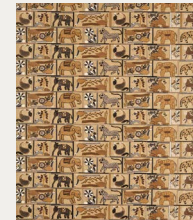
KALEIDO 134784



KALEIDO 134785



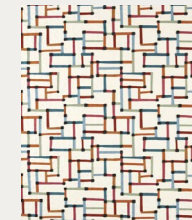
KANTHA 134779



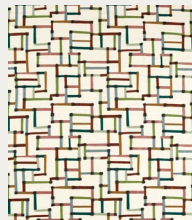
KANTHA 134780



KANTHA 134781



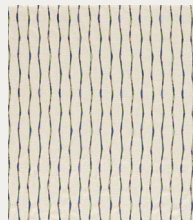
LINEAS 134786



LINEAS 134787



MORELIA 134774



MORELIA 134775



PINTURA 134794



REBOZO 134790



REBOZO 134791



ZAMORA 134792



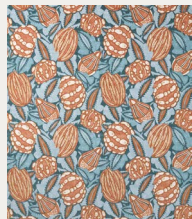
ZAMORA 134776



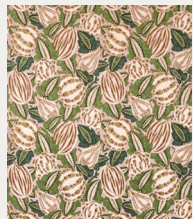
ZAMORA 134777



ZAMORA 134778



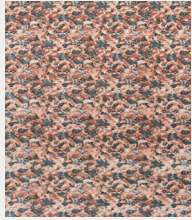
ZENITH 121347



ZENITH 121348

Click on the product images to discover more.

WEAVES INDEX



DERAIN 134759



DERAIN 134760



DERAIN 134761



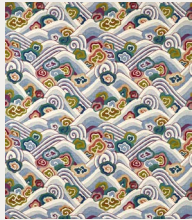
DERAIN 134762



DERAIN 134763



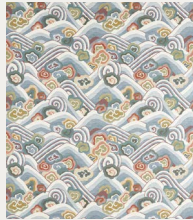
DERAIN 134764



KANAGAWA 134769



KANAGAWA 134770



KANAGAWA 134771



KILLIM 134756



KILLIM 134757



KILLIM 134758



KUPARR 134765



KUPARR 134766



KUPARR 134767



KUPARR 134768

Click on the product images to discover more.

CONTACT PAGE



CHRISTCHURCH SHOWROOM

Designmade, 400 Barbadoes Street,
Christchurch 8013
T: (03) 423 9946
E: christchurch@designmade.co.nz

WELLINGTON SHOWROOM

Wellington Design Library, 282 Thorndon
Quay, Pipitea, Wellington 6011
T: (04) 471 2800
E: info@wellingtondesignlibrary.co.nz

HEAD OFFICE

Lisa Woodbridge (Director)
T: (03) 352 8668
E: lisa@malcolmfabrics.co.nz

WWW.MALCOLMFABRICS.CO.NZ

@MALCOLMFABRICS