

HARLEQUIN

REFLECT



DIGITAL DESIGN BOOK



HARLEQUIN

REFLECT

EMBRACING COLOUR, TACTILITY AND THE EXPRESSIVE FORMATIONS FOUND IN THE NATURAL WORLD, REFLECT IS AN ARTISTICALLY COMPOSED COLLECTION OF FABRIC AND WALLPAPER.

Igniting design passion through composition, palette, scale, and perspective, Reflect harnesses the power of iconic designs. Exciting new juxtapositions of architectural influences, modern art, and the organic flow of nature come together in an expressive and useable collection of wallcoverings, printed fabrics, velvets, weaves, and embroideries.

New perspectives are revealed in aerial views and silhouette forms within the collection. The designs and patterns found in Reflect catch the eye in a myriad of ways, where new designs make their mark and icons are revisited with earthy, grounded tones, much-loved by Harlequin.

The dramatic elements of nature have been translated in Reflect, bringing designs to the fore with mineral tones, luxurious finishes and incomparable textures. From the voluptuous drape of printed fabrics, which play with geometrics, free flowing art and organic shaping that reveals mid-century inspired designs, to the luscious embroidery and transformative weave qualities found within the collection. Nature is referenced and elevated to new meaning in the textures of fabrics.

Embossed vinyls meet gravure and rotary printing techniques in the collection of wallcoverings. Textures and tones reflect artistic influences, which the colour palette draws out in ombre tones and use of light and shade with aplomb. Wide widths and mural panels display organic beauty in earth-inspired colourways.

Globally appealing, Reflect is connected to the earth and its cultural beauty, from the artisanal stitch of weaves or the shadowing of ferns in the breeze on wallcoverings, every design in the collection harnesses the expressive flow of nature.

All wallpapers and printed fabrics made in the UK.
harlequin.sandersondesigngroup.com @harlequinfw .

FAWN

This new animal spot is set to be an instant Harlequin classic. This softly freckled fabric appears to be a dainty design but is impactful at scale. In an array of muted, natural tones, it's sumptuous feel and animalistic aesthetic is irresistible.



FAWN

134030



ENIGMATIC

113108



JUTO

134011



THALIA

134018





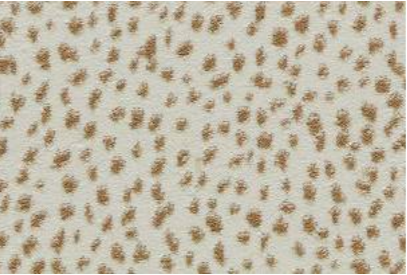
FORMATION

A graphic contour design moves in slow motion across this wallcovering, reflecting a ripple as if looking at the amazon from above. The simplicity of this stripped back design, paired with the grounding colourways, creates an expressive scape across walls.



FORMATION

113099



FAWN

134028



FAWN

134033

ONBURU

A truly organic design, Onburu, meaning ombre in Japanese, reflects a symbiosis of modern art and the earth's natural beauty. Derived from the earth's seasonal shifts, it pulls from the natural mix of colours found in our landscapes.



ONBURU

113109



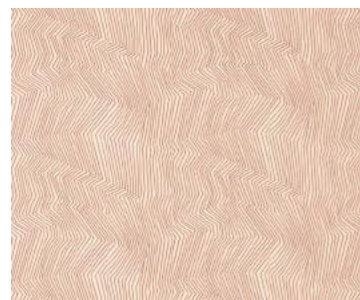
ISLAY

134084



SUMI REFLECT

121199



JUTO

134010



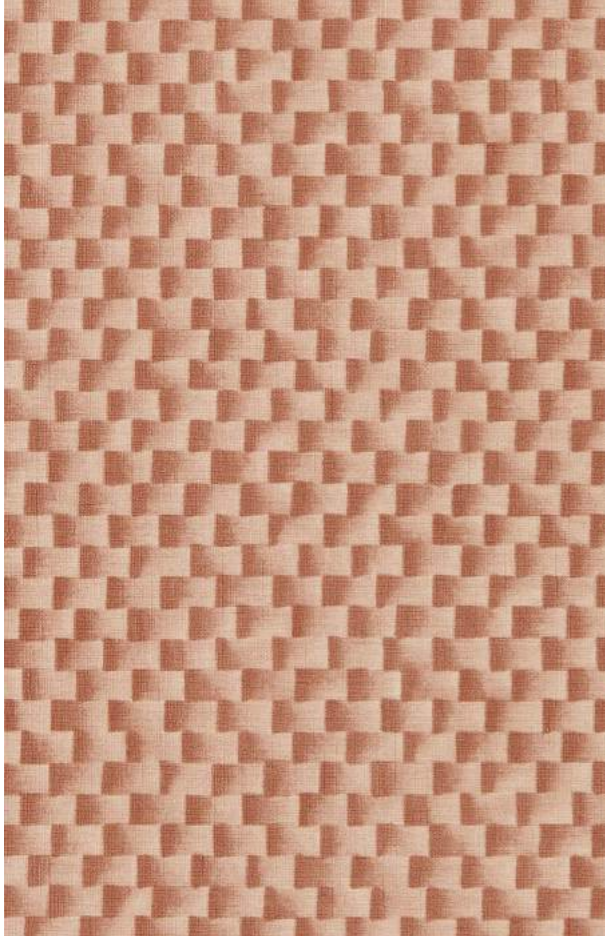
ISLAY

134094



SKIVA

An embossed vinyl in a wide width, Skiva uses ombre tones to create a dimensional quality to this wallcovering. Inspired by the structured weave of rattan furniture, Skiva uses light and shadow to create impact in useable tones.



SKIVA

113091



VIDI

134027



ENIGMATIC

121201



PERPLEX

134046





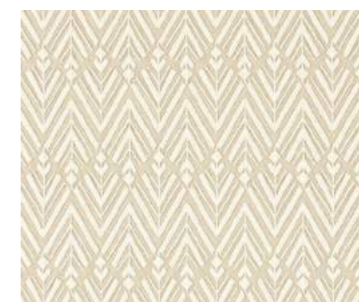
METAMORPHIC

Metamorphic is a stunning wide-width wallcovering portraying crushed layers of rock, representing the natural evolution of time. A marble-esque design, there is a calming nature to the layers of Metamorphic, which appear like sediment, beautifully suspended in this wallcovering.



METAMORPHIC

113101



THALIA

134019



LACUNA

134039



ISLAY

134084



VIDI

134027



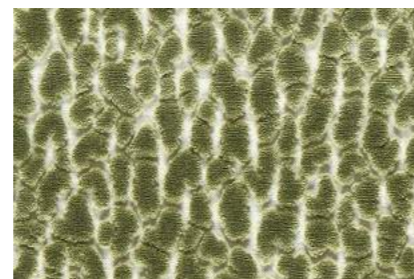
TORILLO

Torillo relishes in the artistic joy of organic shapes that have been sliced and rearranged for a more abstract, mid-century appeal. A contemporary, casual kaleidoscopic pattern. From the dissection of circles comes curves and arches, displaced, and yet perfectly balanced in this printed fabric.



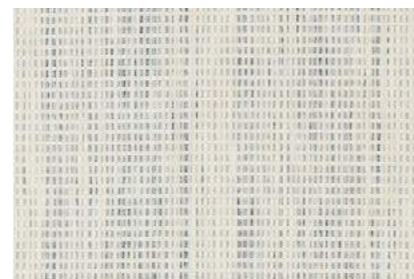
TORILLO

121206



LACUNA

134038



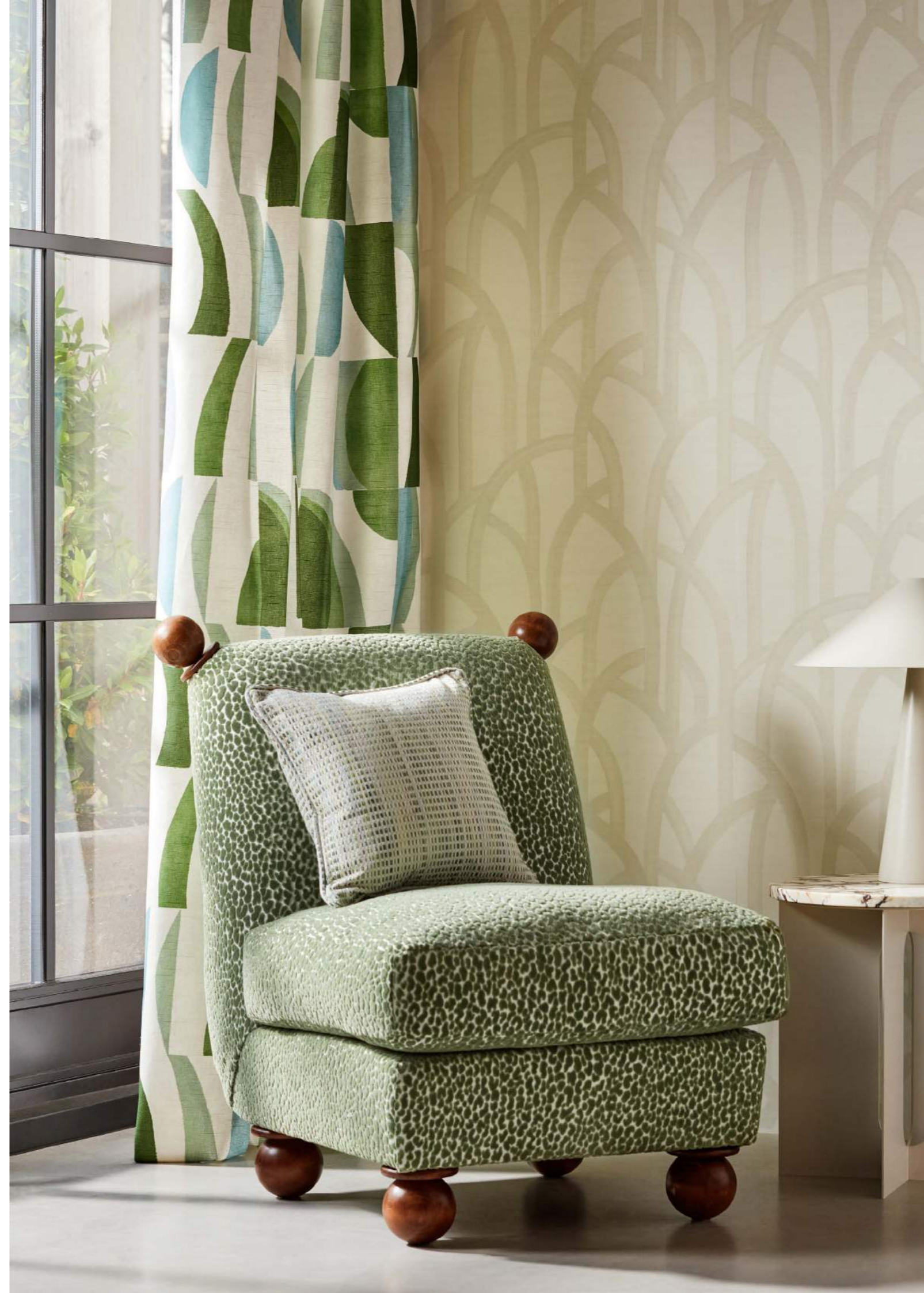
ARIA

134013



MESO

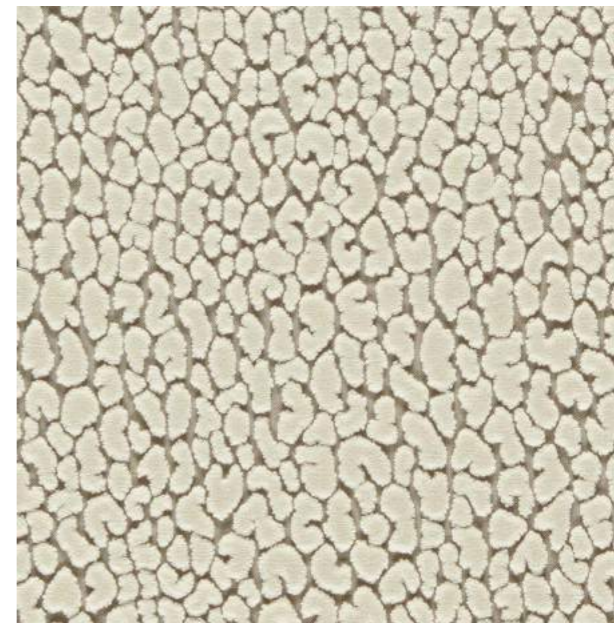
111582





LACUNA

This bold animal velvet has been designed in an array of colours, morphing between the subtlety of a matt and mid sheen fabric. The meaning of 'lacuna' to mean an unfilled space, has been interpreted here in the depth and texture of the fabric, giving way to rivulets of space that form the velvet. Inspired by the plains of Africa, this fabric elevates layered, textured schemes.



LACUNA

134037



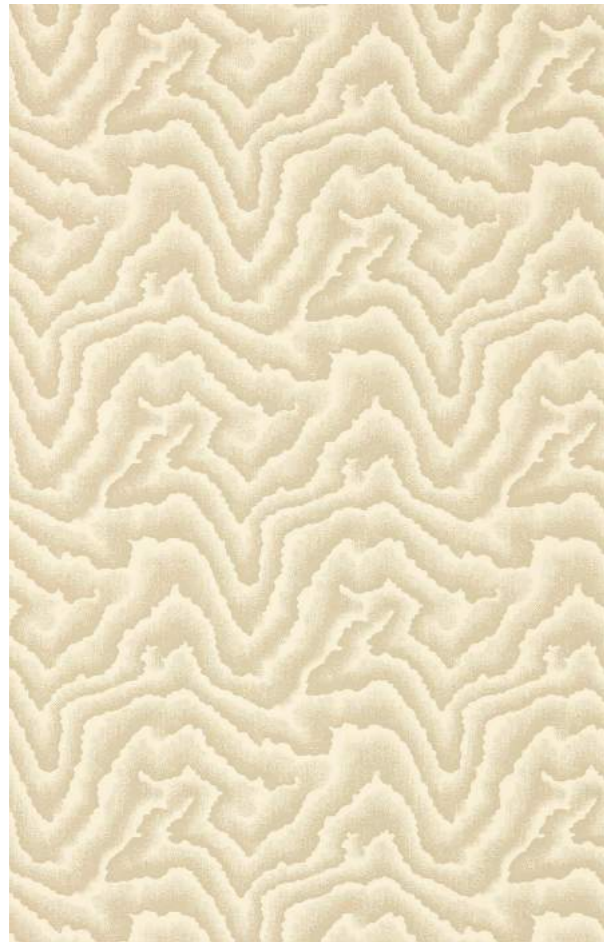
EXTRAVAGANCE

113097

MALACHITE

As if cut through the malachite stone, this design reveals a cross section of the stone's natural formation, with pooling layers drifting out from one another.

Malachite has been rotary printed for a chalky texture to emphasise its earthy sedimentary connection.



MALACHITE

113075



FAWN

134030



FAWN

134032



ARRAN

134078





THALIA

Thalia is a transformative weave on a cotton linen base. Exceptionally textured, the design, depending on its rotation, has many forms. Reminiscent of a wheat field in the neutral colourways, an arrow tail appears in the Black Earth shade and in Kelly green, an Alpine tree. The ultimate in an interpretive weave, Thalia is adaptable for many interior schemes.



THALIA

134016



ENIGMATIC

121204



FAWN

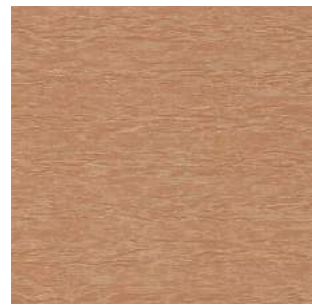
134028



LACUNA

134040

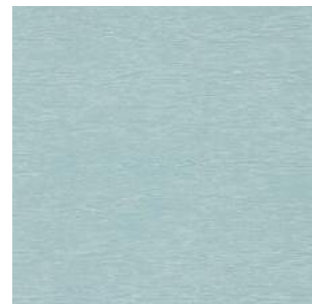
REFLECT WALLPAPER INDEX



ARCUS 113079



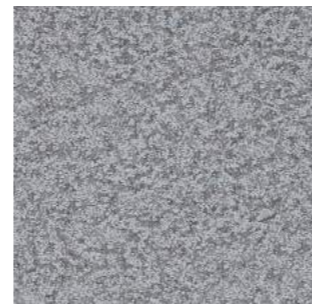
ARCUS 113080



ARCUS 113081



ARCUS 113082



CORAL 110761



CORAL 110764



CORAL 110765



CORAL 110766



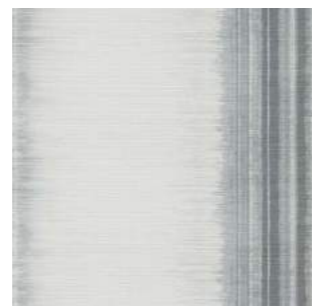
CORAL 111871



DISTINCT 113104



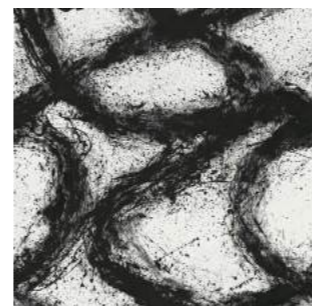
DISTINCT 113563



DISTINCT 111566



ENIGMATIC 113107



ENIGMATIC 113108



EXTRAVAGANCE 113095



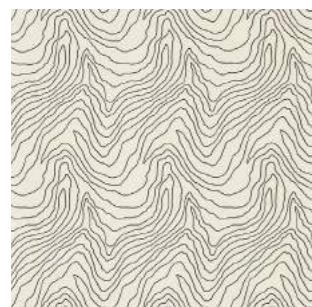
EXTRAVAGANCE 113096



EXTRAVAGANCE 113097



FORMATION 113098



FORMATION 113099



FORMATION 113100



FORMATION 111588



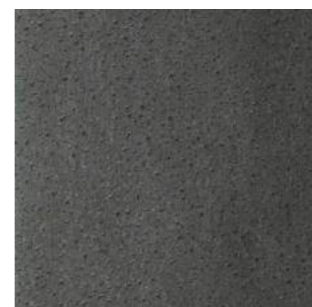
FORMATION 111589



FORMATION 111591



FOXY 110737



FOXY 110740



FOXY 110742



IGNEOUS 111137



IGNEOUS 111138



IGNEOUS 111139



IGNEOUS 111140



IGNEOUS 111141



IGNEOUS 111142



IGNEOUS 111143



LACUNA STRIPE 113070



LACUNA STRIPE 113071



LACUNA STRIPE 113072



LACUNA STRIPE 113073



LACUNA STRIPE 113074



LUSTRE 111620



LUSTRE 111621



LUSTRE 111622



LUSTRE 111623



MAKRANA 110914



MAKRANA 110916



MAKRANA 110917

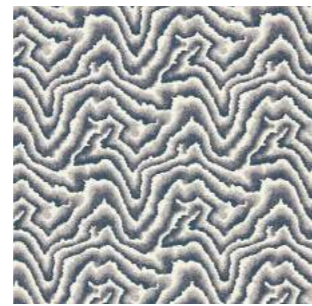
REFLECT WALLPAPER INDEX



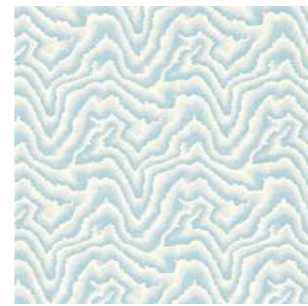
MAKRANA 110918



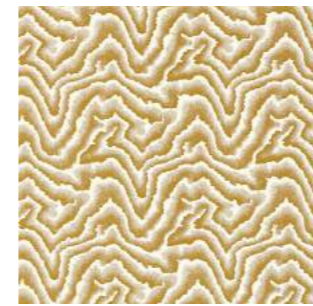
MALACHITE 113075



MALACHITE 113076



MALACHITE 113077



MALACHITE 113078



MARBLE 110754



MARBLE 110756



MARBLE 110758



MARBLE 110759



MARBLE 110760



MESO 111579



MESO 111581



MESO 111582



METAMORPHIC 112051



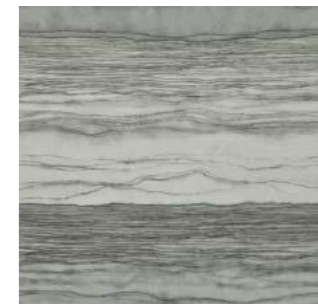
METAMORPHIC 112052



METAMORPHIC 112055



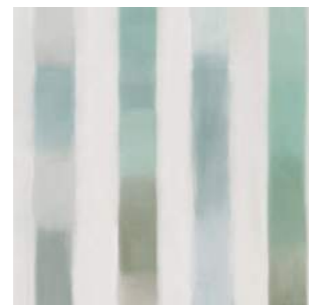
METAMORPHIC 113101



METAMORPHIC 113102



ONBURU 113109



ONBURU 113110



PALLA 113083



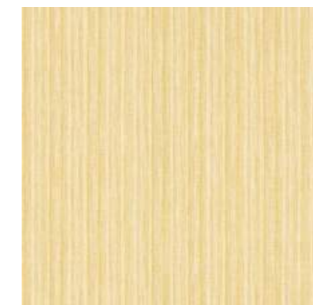
PALLA 113084



PALLA 113085



PALLA 113086



PALLA 113087



PALLA 113088



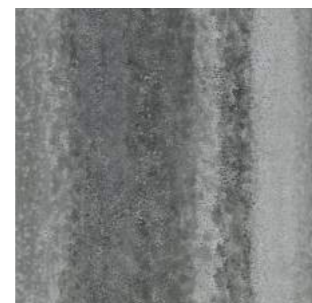
PALLA 113089



SABKHA 111611



SABKHA 111612



SABKHA 111613



SABKHA 111614



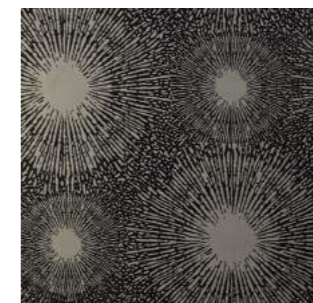
SABKHA 111615



SHATTER 111851



SHATTER 111853



SHORE 110788



SHORE 110790



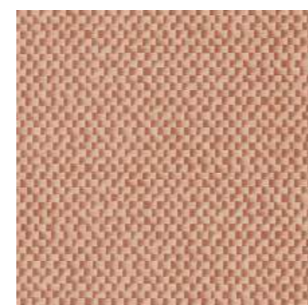
SHORE 110794



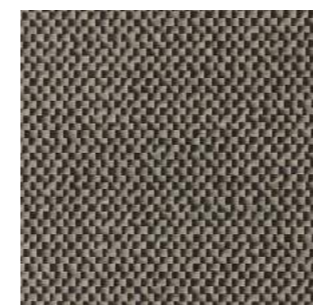
SHORE 110795



SKIVA 113090



SKIVA 113091



SKIVA 113092

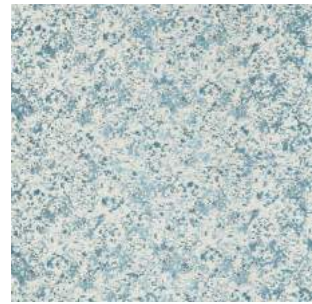


SKIVA 113093



SKIVA 113094

REFLECT FABRIC INDEX



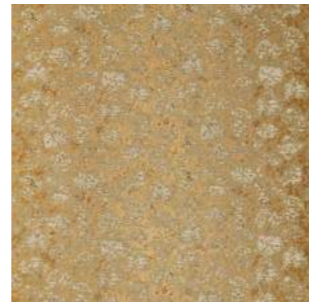
ACONITE 134004



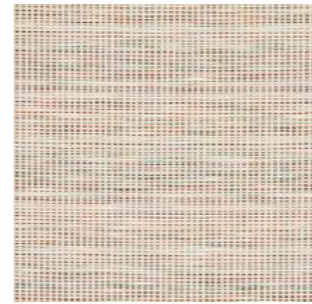
ACONITE 134005



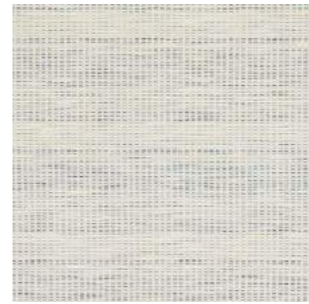
ACONITE 134006



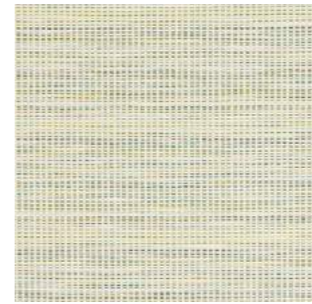
ACONITE 134007



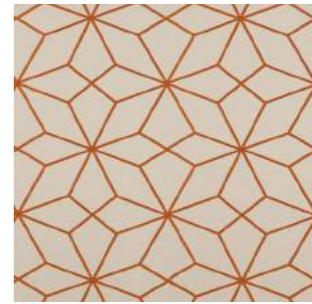
ARIA 134012



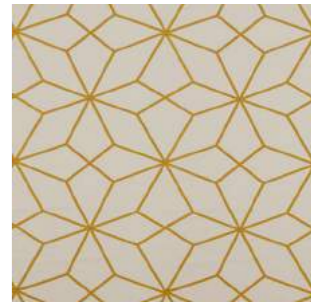
ARIA 134013



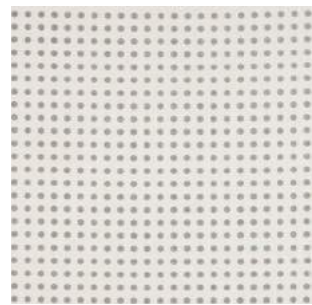
ARIA 134014



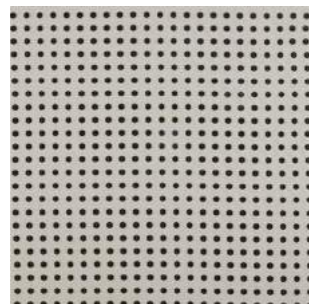
AXAL 132775



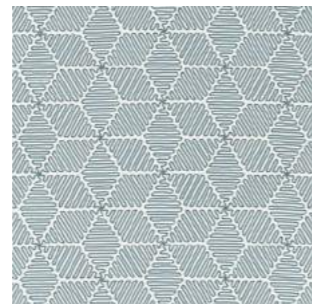
AXAL 132776



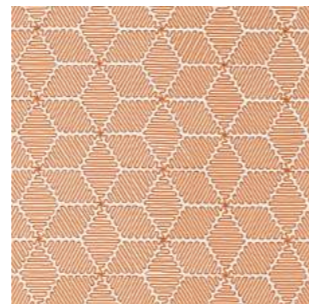
CONVEX 132782



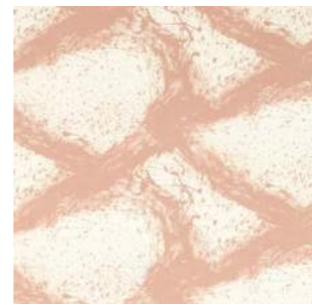
CONVEX 132783



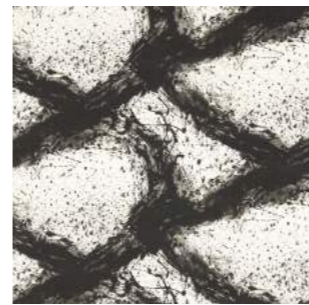
CUPOLA 132232



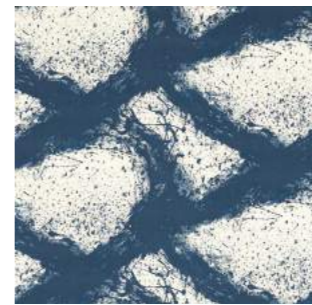
CUPOLA 132234



ENIGMATIC 121201



ENIGMATIC 121202



ENIGMATIC 121203



ENIGMATIC 121204



FORMATION 132216



JUTO 134008



JUTO 134009



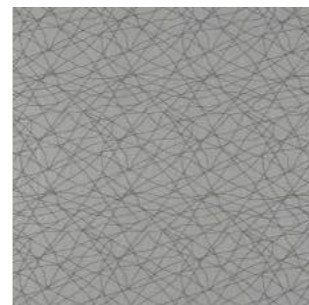
JUTO 134010



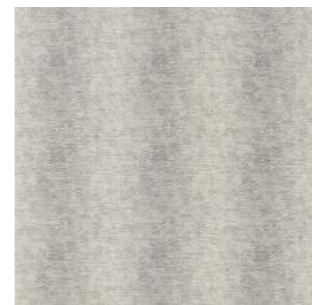
JUTO 134011



KOTO 131362



KOTO 131363



METAPHOR 132213



MORIKO 131379



PERSPECTIVE 132791



PERSPECTIVE 132792



PERSPECTIVE 132793



PONTIA 132243



PONTIA 132244



SUMI REFLECT 121198



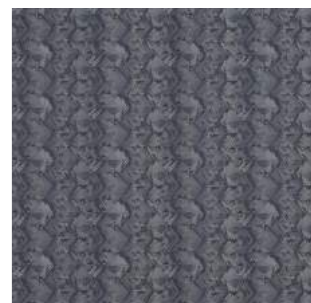
SUMI REFLECT 121199



SUMI REFLECT 121200



TANABE 132270



TANABE 132272



TANABE 132273



THALIA 134015



THALIA 134016



THALIA 134017



THALIA 134018



THALIA 134019



TORILLO 121205



TORILLO 121206

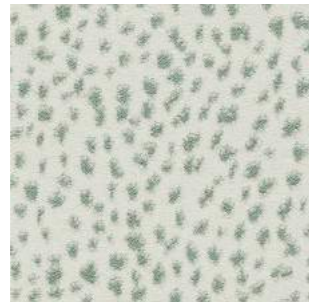


TORILLO 121207

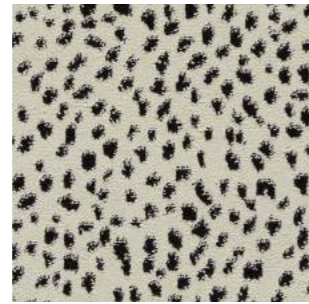
REFLECT VELVET INDEX



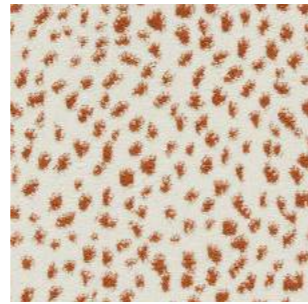
FAWN 134028



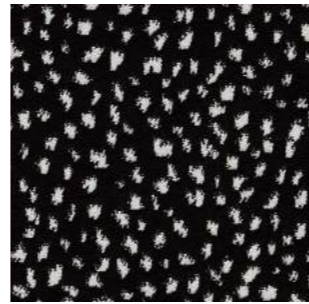
FAWN 134029



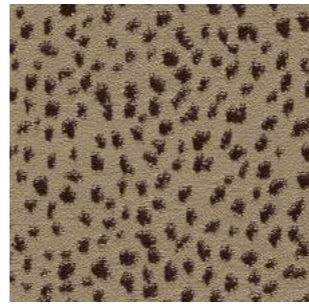
FAWN 134030



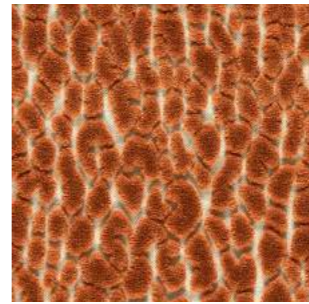
FAWN 134031



FAWN 134032



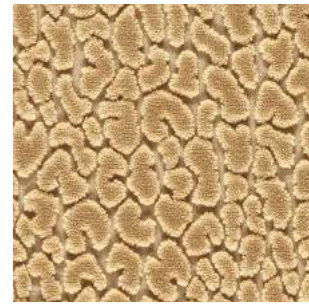
FAWN 134033



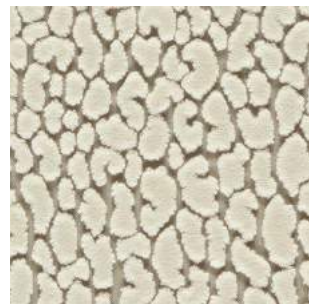
LACUNA 134034



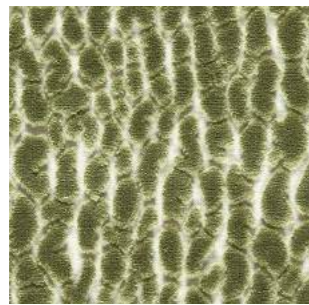
LACUNA 134035



LACUNA 134036



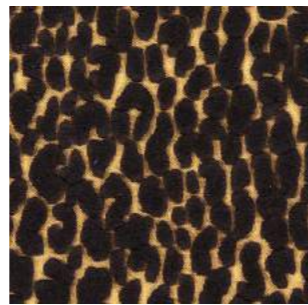
LACUNA 134037



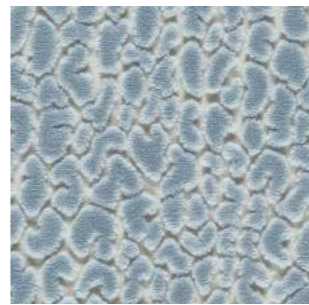
LACUNA 134038



LACUNA 134039



LACUNA 134040



LACUNA 134041



PERPLEX 134042



PERPLEX 134043



PERPLEX 134044



PERPLEX 134045



PERPLEX 134046



VIDI 134023



VIDI 134024



VIDI 134025



VIDI 134026



VIDI 134027