

HARLEQUIN

SHEERS I



DIGITAL DESIGN BOOK

HARLEQUIN

SHEERS I

HARLEQUIN LAUNCHES ITS GO TO BOOK OF WIDE WIDTH SHEERS, NEW FOR AW23.

Harlequin is delighted to present a beautiful, new compilation of 25 wide width sheers across 66 skus, in a range of pared back, natural colour stories. Comprising original and best-selling designs, including 100% linens and inherently FR qualities, this go-to collection spans Harlequin's signature style, from soft, tonal plains to bold, abstract patterns.

With a lovely gentle handle, nature inspired designs are named after the calm of scattered clouds or the atmosphere that surrounds us. Floaty, ethereal and delicate, the launch features some of our favourite wallpaper murals, translated into statement sheers for the first time.

Sitting within our four signature looks: Renew, Rewild, Retreat and Reflect, the sheers are evocative of our interior personalities, offering a choice of lightweight window dressings suitable for any space.

Enigmatic, Foresta, Grounded and Melodic sheers are inherently fire retardant, making them the ideal choice for contract settings.

Claire Greenfield, lead designer at Harlequin explains, "Harlequin is well known as the home of pattern and colour, so we wanted to extend our portfolio with a new book of wide width sheers that are suitable for both contract and home settings. The launch includes a selection of finely woven linen qualities and a range of inherently FR designs in a wide range of colour stories that integrate with our four looks Renew, Rewild, Retreat and Reflect. This is the first time we've translated any of our murals into sheers and we're so pleased with the result – it's given the traditional sheer a complete facelift, transporting it into something much more contemporary and exciting."

HARLEQUIN

SHEERS I

AIR SHEER

Make time to dream with our ethereal 100% linen sheer that repeats top to bottom and side to side. Gracefully drifting across endless skies, atmospheric clouds introduce an effortlessly elegant, pared back look.

Left to right: Sky Blue Air Sheer, Fayola Tranquility/Exhale/Celestial Cushion, Sow Baked Terracotta/ Soft Focus Cushion and Mini Wood Frog Terracotta/Parchment/Sketched Focus Cushion.





HARLEQUIN

SHEERS I

FLOREANA SHEER

Originally drawn in pen and ink, Floreana is a botanical extravaganza made in collaboration by the Harlequin design team. A fantastic and different choice for contract and domestic settings, this incredibly special 100% linen sheer is inherently fire retardant.

Left to right: Bleached Coral/Succulent Floreana Sheer, Bayamo Pearl Cushion, Ertha Positano/Clover/Fig Leaf Cushion and Ertha Positano/Clover/Fig Leaf Pouffe.

HARLEQUIN

SHEERS I

ENIGMATIC SHEER

Alive with free-flowing movement and created outdoors by an expressive hand, abstract markings twist and turn across a huge 3x3m repeat on a semi-transparent ground. Contemporary and statemental, Enigmatic Sheer is inspired by the mid-century phenomenon of kinetic art – it's inherently fire retardant too.

Left to right: Japanese Ink Enigmatic Sheer, Melodic Japanese Ink/Origami Wallpaper, Plush Velvet Midnight Headboard, Plush Velvet Saffron Cushion and Melodic Japanese Ink/Origami Cushion.





HARLEQUIN

SHEERS I

FORESTA SHEER

Explore an interpretive woodland filled with beautifully diffused leaves, originally hand painted on silk and translated to create a nature inspired sheer. An immersive design, Foresta is a vista of colour, movement and technique. It's also inherently fire retardant, making this sheer ideal for contract and domestic settings.

Left to right: Florent Hempseed/Lagoon/Rosehip Cushion and Baked Terracotta Foresta Sheer.

FABRIC INDEX



SENKEI | 132342



SENKEI | 132344



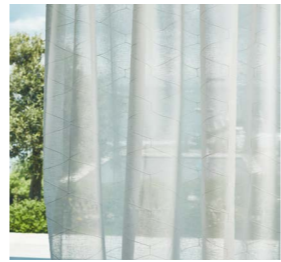
EQUUS | 133932



EQUUS | 133933



ARBOR | 133934



ARBOR | 133935



NUVOLE | 133936



NUVOLE | 133937



MELODIC SHEER | 133938



MELODIC SHEER | 133939



MELODIC SHEER | 133940



ETHER | 133941



ETHER | 133942



ETHER | 133943



ALTO | 133944



ALTO | 133945



AMBLE | 133946



AMBLE | 133947



AMBLE | 133948



STRATUS | 133949



GROUNDED SHEER | 133950



GROUNDED SHEER | 133951



GROUNDED SHEER | 133952



FORESTA SHEER | 133953



FORESTA SHEER | 133954



ERTHA SHEER | 133955



ERTHA SHEER | 133956



ERTHA SHEER | 133957



AIR SHEER | 133958



FLOREANA SHEER | 133959



FLOREANA SHEER | 133960



ENIGMATIC SHEER | 133961



ENIGMATIC SHEER | 133962



HIMMEL | 133979



HIMMEL | 133980



HIMMEL | 133981



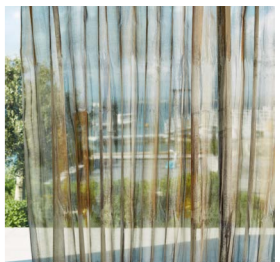
KIYOSHI | 131816



KIYOSHI | 131815



YUTI | 131803



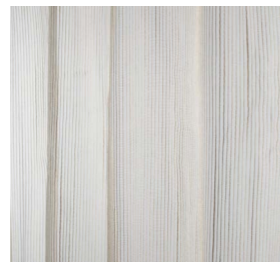
YUTI | 131804



KIMIE | 131458



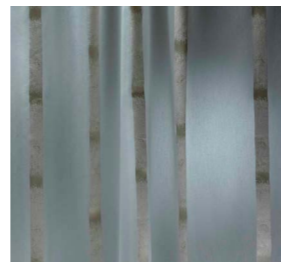
KIMIE | 131457



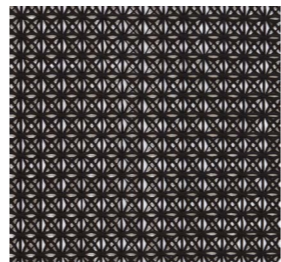
KIMIE | 131459



GLINT | 130582



GLINT | 130581



RIBBON | 130587



RIBBON | 130588



RIBBON | 130590



TRANQUIL | 130958



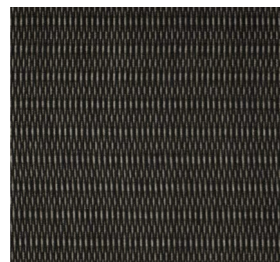
TRANQUIL | 130956



TRANQUIL | 130955



TRANQUIL | 130957



LATTICE | 130555

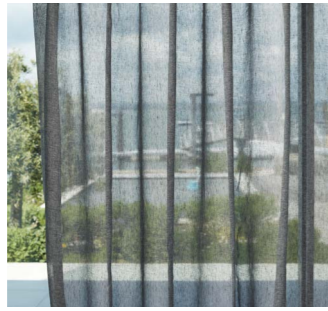


LATTICE | 130558

FABRIC INDEX



LUCENT | 133964



LUCENT | 133965



LUCENT | 133966



LUCENT | 133967



LUCENT | 133968



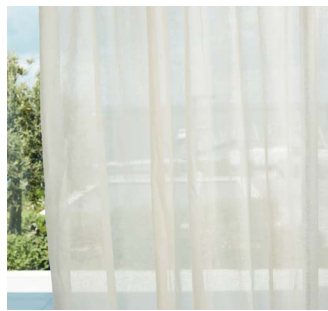
LUCENT | 133969



LUCENT | 133970



LUCENT | 133971



LUCENT | 133972



LUCENT | 133973



LUCENT | 133974



LUCENT | 133975

