



**BRINK & CAMPMAN**  
home interiors

**Collection 2022**





**B & C** design & craftsmanship since 1897







# Brink & Campman

At B&C we have been making rugs for almost 125 years. Rugs that are born out of a combination of passion, craftsmanship and sustainability. Our love for beautiful yarns and their endless possibilities motivates us each time to design and make the most unique and innovative rugs.

Besides the knowledge we have gained in the past century, we are constantly looking for innovation. We work with carefully selected producers from all over the world to develop new techniques and qualities. This collaboration ensures that we can continue to innovate and improve and is reflected in the versatile collection of rugs for which Brink & Campman is renowned.

We know better than anyone that every step in the process from raw wool to refined rug is of great importance.

That's why we look for the best applications and materials at every step.

The majority of our rugs are produced in our factory in Lichtenvoorde, the Netherlands, so we have a perfect view of the different processes that are so important to ensure the high-quality result we always envision.









# Yarns

A large proportion of the rugs in B&C's collection are made using yarns that we have developed ourselves over the years.

The development of these fibers enables us to make carpets in which the yarn rather than the design determines the appearance of the carpet.

Through our years of experience and constant development in this area, we can proudly say that we have developed materials that show the clear signature of B&C. We have developed yarns that get their unique look from the way they are dyed, felted or spun.

This development is an essential part of the design process, where a lot of attention is paid to the color, material thickness, material composition, etc. A minimal adjustment in one of these aspects can result in a maximum difference in the appearance of the rug that is eventually brought into the collection.











# Trace

axminster woven - pure new wool

total weight ca 5500 gr/m<sup>2</sup>

pile weight ca 4000 gr/m<sup>2</sup>

pile height ca 35 mm

available sizes:

140x200 cm 4'7" x 6'7"

170x240 cm 5'7" x 7'10"

200x300 cm 6'7" x 9'8"

250x350 cm 8'2" x 11'6"

custom sizes on request



Trace mandarin orange | cut pile 120903



Trace midnight blue | cut pile 120908



Trace midnight blue | loop pile 121008



Trace mandarin orange | loop pile 121003



Trace olive green | cut pile 120917



Trace olive green | loop pile 121017



Trace turmeric yellow | cut pile 120906



Trace forest green | cut pile 120907



Trace forest green | loop pile 121007



Trace turmeric yellow | loop pile 121006 9

# Rocks

axminster woven - pure new wool

total weight ca 5500 gr/m<sup>2</sup>

pile weight ca 4000 gr/m<sup>2</sup>

pile height ca 20/50 mm

available sizes:

140x200 cm 4'7" x 6'7"

170x240 cm 5'7" x 7'10"

200x300 cm 6'7" x 9'8"

250x300 cm 8'2" x 9'8"

250x350 cm 8'2" x 11'6"

custom sizes on request



Rocks 70411



Rocks 70213



Rocks 70401



Rocks 70501



Rocks 70504



Rocks 70405



Rocks 70407



Rocks 70415











# Dots

axminster woven - pure new wool

total weight ca 4500 gr/m<sup>2</sup>

pile weight ca 3000 gr/m<sup>2</sup>

pile height ca 25/30 mm

available sizes:

140x200 cm 4'7" x 6'7"

170x240 cm 5'7" x 7'10"

200x300 cm 6'7" x 9'8"

250x350 cm 8'2" x 11'6"

custom sizes on request



Dots 170411



Dots 170213



Dots 170401



Dots 170501



Dots 170504



Dots 170405



Dots 170407



Dots 170415 13

# Pop Art

axminster woven - pure new wool

total weight ca 4000 gr/m<sup>2</sup>

pile weight ca 2600 gr/m<sup>2</sup>

pile height ca 15/40 mm

available sizes:

140x200 cm 4'7" x 6'7"

160x230 cm 5'3" x 7'6"

200x280 cm 6'7" x 9'2"

custom sizes on request



Pop Art 066904



Pop Art 066901



Pop Art 066907



Pop Art 066906



Pop Art 066902



Pop Art 066905











# Gravel

axminster woven - pure new wool

total weight ca 4400 gr/m<sup>2</sup>

pile weight ca 3000 gr/m<sup>2</sup>

pile height ca 35 mm

available sizes:

140x200 cm 4'7"x 6'7"

170x240 cm 5'7"x 7'10"

200x300 cm 6'7"x 9'8"

250x350 cm 8'2"x 11'6"

custom sizes on request



Gravel 68009



Gravel 68001



Gravel 68209



Gravel 68201



Gravel 68211 17











# Young

tufted - pure new wool  
total weight ca 3900 gr/m<sup>2</sup>  
pile weight ca 2500 gr/m<sup>2</sup>  
pile height ca 15/45 mm  
available sizes:  
140x200 cm 4'7" x 6'7"  
160x230 cm 5'3" x 7'6"  
200x280 cm 6'7" x 9'2"  
250x350 cm 8'2" x 11'6"  
custom sizes on request



Young 061804



Young 061801



Young 061805



Young 061807



Young 061806



Young 061802











# Quartz

axminster woven - pure new wool

total weight ca 3200 gr/m<sup>2</sup>

pile weight ca 1800 gr/m<sup>2</sup>

pile height ca 15/35 mm

available sizes:

140x200 cm 4'7" x 6'7"

170x240 cm 5'7" x 7'10"

200x300 cm 6'7" x 9'8"

custom sizes on request



Quartz 067104



Quartz 067101



Quartz 067105



Quartz 067118



Quartz 067108 23



# Spring

axminster woven - pure new wool

total weight ca 3900 gr/m<sup>2</sup>

pile weight ca 2500 gr/m<sup>2</sup>

pile height ca 15/45 mm

available sizes:

140x200 cm 4'7" x 6'7"

170x240 cm 5'7" x 7'10"

200x300 cm 6'7" x 9'8"

250x350 cm 8'2" x 11'6"

custom sizes on request



Spring 59107



Spring 59103



Spring 59101



Spring 59105











# Flamenco

tufted - pure new wool  
total weight ca 3600 gr/m<sup>2</sup>  
pile weight ca 2400 gr/m<sup>2</sup>  
pile height ca 15/40 mm  
available sizes:  
140x200 cm 4'7" x 6'7"  
160x230 cm 5'3" x 7'6"  
200x280 cm 6'7" x 9'2"  
250x350 cm 8'2" x 11'6"  
custom sizes on request



Flamenco 59004



Flamenco 59001



Flamenco 59005



Flamenco 59018



Flamenco 59017 27



# Arch

tufted - pure new wool  
total weight ca 4150 gr/m<sup>2</sup>  
pile weight ca 2800 gr/m<sup>2</sup>  
pile height ca 30 mm  
available sizes:  
140x200 cm 4'7" x 6'7"  
170x240 cm 5'7" x 7'10"  
200x280 cm 6'7" x 9'2"  
250x350 cm 8'2" x 11'6"  
custom sizes on request



Arch 067004



Arch 067001



Arch 067005



Arch 067007

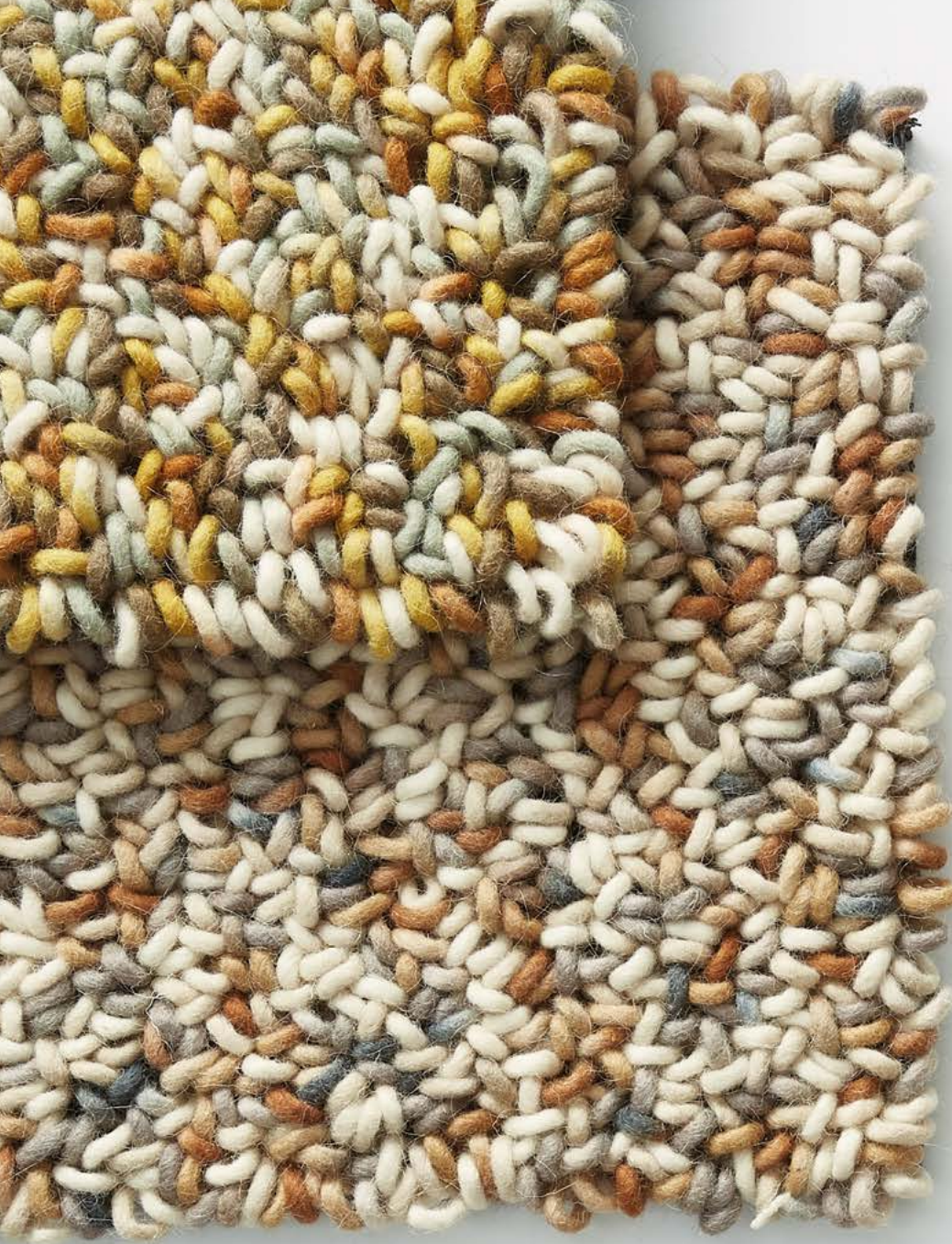


Arch 067006



Arch 067002



















# Twinset | Mural forest

tufted - pure new wool  
total weight ca 3500 gr/m<sup>2</sup>  
pile weight ca 2000 gr/m<sup>2</sup>  
pile height ca 17 mm  
available sizes:  
140x240 cm 4'7" x 7'10"  
160x280 cm 5'3" x 9'8"  
200x350 cm 6'7" x 11'6"  
250x440 cm 8'2" x 14'5"

Mural forest 121107











# Twinset | Mural burgundy

tufted - pure new wool  
total weight ca 3500 gr/m<sup>2</sup>  
pile weight ca 2000 gr/m<sup>2</sup>  
pile height ca 17 mm  
available sizes:  
140x200 cm 4'7" x 6'7"  
170x240 cm 5'7" x 7'10"  
200x280 cm 6'7" x 9'2"  
250x350 cm 8'2" x 11'6"

Mural burgundy 121100



# Twinset | Mural cement

tufted - pure new wool  
total weight ca 3500 gr/m<sup>2</sup>  
pile weight ca 2000 gr/m<sup>2</sup>  
pile height ca 17 mm  
available sizes:  
140x200 cm 4'7" x 6'7"  
170x240 cm 5'7" x 7'10"  
200x280 cm 6'7" x 9'8"  
250x350 cm 8'2" x 11'6"

Mural cement 121104













# Twinset | Divina

tufted - pure new wool  
total weight ca 3700 gr/m<sup>2</sup>  
pile weight ca 2200 gr/m<sup>2</sup>  
pile height ca 17 mm  
available sizes:  
140x200 cm 4'7" x 6'7"  
170x240 cm 5'7" x 7'10"  
200x300 cm 6'7" x 9'8"  
250x350 cm 8'2" x 11'6"  
custom sizes on request



Twinset Divina 013401



Twinset Divina 013407 39



# Twinset | Urban

tufted - pure new wool/ Tencel™  
total weight ca 3700 gr/m2  
pile weight ca 2200 gr/m2  
pile height ca 17 mm  
available sizes:  
140x200 cm 4'7" x 6'7"  
170x240 cm 5'7" x 7'10"  
200x300 cm 6'7" x 9'8"  
250x350 cm 8'2" x 11'6"  
custom sizes on request  
custom colors are available

Twinset Urban 22101



Twinset cut 21504

Twinset loop 21404



Twinset cut 21501

Twinset loop 21401



Twinset cut 21506

Twinset loop 21406











# Twinset | Frame & Skyline

tufted - pure new wool/ Tencel™  
total weight ca 3700 gr/m2  
pile weight ca 2200 gr/m2  
pile height ca 17 mm  
available sizes:  
140x200 cm 4'7"x 6'7"  
170x240 cm 5'7"x 7'10"  
200x300 cm 6'7"x 9'8"  
250x350 cm 8'2"x 11'6"  
custom sizes on request



Twinset Frame 21206



Twinset cut 21504

Twinset loop 21404



Twinset cut 21501

Twinset loop 21401



Twinset cut 21506

Twinset loop 21406







# Handmade

A large part of the B&C collection is handmade. We have rugs that are knotted, woven or tufted by hand in different parts of the world.

The handknotted carpets gain their quality and beautiful appearance through the use of traditional techniques in combination with the most beautiful yarns. The craftsmanship and the traditional way of working catch the eye and allow us to go a step further in the development of the designs.

In addition to the handknotted rugs, we have rugs that are woven by hand. These rugs are characterized by the technique of flat weaving. We are always looking for new techniques and possibilities within flat weaving. For example, we have developed a double-weave technique that makes it possible to use large open-weave structures in the designs.

Furthermore, we have handtufted rugs. This quality offers totally different possibilities. When tufting, for instance a loop pile or a cut pile can be chosen. These two can also be combined very well in different designs to achieve a very surprising result.

All of these techniques are mastered by our partners already for generations onwards. The love for these skills, materials and colors are visible in each and every rug.



# Pebble

handwoven - pure new wool  
total weight ca 4500 gr/m<sup>2</sup>  
pile weight ca 4200 gr/m<sup>2</sup>  
no pile due to flatweave structure  
available sizes:  
140x200 cm 4'7" x 6'7"  
170x240 cm 5'7" x 7'10"  
200x300 cm 6'7" x 9'8"  
250x350 cm 8'2" x 11'6"  
custom sizes on request



Pebble fresh green 129807



Pebble touch of orange 129803



Pebble natural sand 129811



Pebble beach beige 129801



Pebble cool grey 129804











# Tumble

handwoven – pure new wool  
total weight tumble ca 2400 gr/m2  
pile weight tumble ca 3700 gr/m2  
no pile due to flatweave structure  
available sizes:  
140x 200 cm 4'7" x 6'7"  
160x 230 cm 5'3" x 7'6"  
200x 280 cm 6'7" x 9'2"  
250x 350 cm 8'2" x 11'6"  
custom sizes are available



Tumble 013601



Tumble 013604

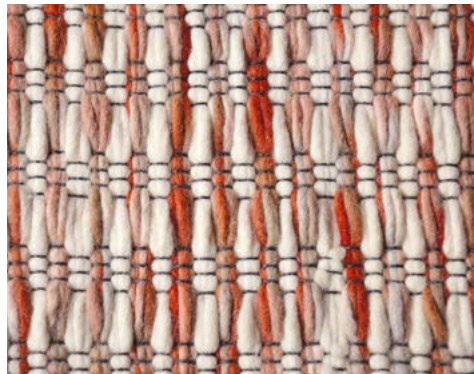


# Grain

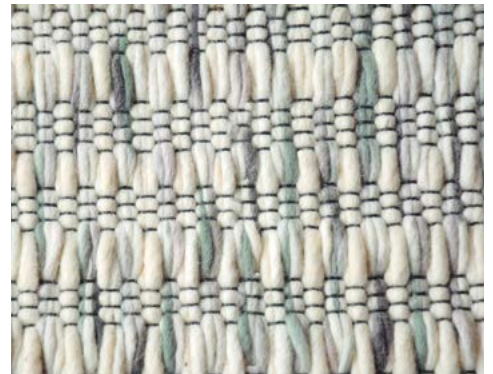
handwoven – pure new wool  
total weight grain ca 2200 gr/m<sup>2</sup>  
pile weight grain ca 4200 gr/m<sup>2</sup>  
no pile due to flatweave structure  
available sizes:  
140 x 200 cm 4'7" x 6'7"  
160 x 230 cm 5'3" x 7'6"  
200 x 280 cm 6'7" x 9'2"  
250 x 350 cm 8'2" x 11'6"  
custom sizes are available



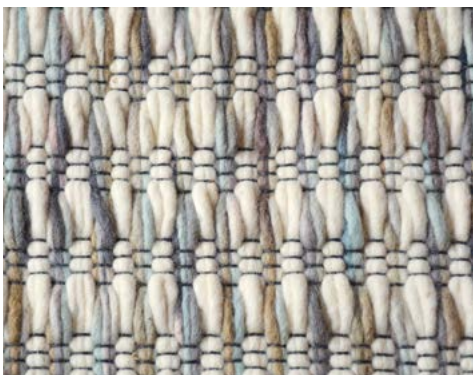
Grain 013501



Grain 013502



Grain 013504



Grain 013505



Grain 013506



Grain 013507











# Cobble

handwoven - pure new wool  
total weight ca 4000 gr/m<sup>2</sup>  
pile weight ca 3700 gr/m<sup>2</sup>  
no pile due to flatweave structure  
available sizes:  
140x200 cm 4'7" x 6'7"  
170x240 cm 5'7" x 7'10"  
200x300 cm 6'7" x 9'8"  
250x350 cm 8'2" x 11'6"  
custom sizes on request



Cobble 29201



Cobble 29204



Cobble 29206



Cobble 29207



Cobble 29208 53



# Marble

handwoven - pure new wool  
total weight ca 4500 gr/m<sup>2</sup>  
pile weight ca 4200 gr/m<sup>2</sup>  
no pile due to flatweave structure  
available sizes:  
140x200 cm 4'7" x 6'7"  
170x240 cm 5'7" x 7'10"  
200x300 cm 6'7" x 9'8"  
250x350 cm 8'2" x 11'6"  
custom sizes on request



Marble 29501



Marble 29503



Marble 29504



Marble 29505



Marble 29507



Marble 29517



Marble 29500









THE  
LIFE  
OF  
THE  
MIND  
IN  
THE  
MIDDLE  
AGES  
BY  
J. H. M. VAN  
DE  
WALL  
AND  
J. H. M. VAN  
DE  
WALL  
THE  
LIFE  
OF  
THE  
MIND  
IN  
THE  
MIDDLE  
AGES  
BY  
J. H. M. VAN  
DE  
WALL  
AND  
J. H. M. VAN  
DE  
WALL



# Atelier

handwoven - pure new wool (design poule with viscose)

total weight ca 2500 gr/m<sup>2</sup>

pile weight ca 2000 gr/m<sup>2</sup>

no pile due to flatweave structure

available sizes:

140x200 cm 4'7" x 6'7"

160x230 cm 5'3" x 7'6"

200x280 cm 6'7" x 9'2"

250x350 cm 8'2" x 11'6"

custom sizes on request



Atelier coco 49903



Atelier poule 49805



Atelier twill 49201



Atelier twill 49206



Atelier twill 49207



Atelier craft 49506



Atelier craft 49502



Atelier craft 49508 57



# Design Studio

All Brink & Campman carpets are created in the design studio, which we proudly refer to as the heart of our company.

Our designers develop the unique collections, starting with a beautiful yarn, inspired by trends, or fascinated by the possibilities of a technique.

In the design process, we work with great passion and creativity, but we do not lose sight of craftsmanship, quality and sustainability.

We are convinced that only together, and in combination with our knowledge and expertise, can all these aspects lead to the high-quality rugs we love to make.

The fact that we bring a new collection every year gives us both the opportunity and the challenge to keep developing, renewing and improving.

An important aspect that we are still working on in the design studio and that we would like to develop even further is sustainability. The fact that we mostly work with natural materials such as wool is of course already an advantage but it is our goal to be on the lookout for opportunities to reduce our ecological footprint.







# Artisan | Focus dawn & dusk

handloom - pure new wool  
total weight ca 4000 gr/m<sup>2</sup>  
pile weight ca 2700 gr/m<sup>2</sup>  
no pile due to flatweave structure  
available sizes:  
140x200 cm 4'7" x 6'7"  
160x230 cm 5'3" x 7'6"  
200x280 cm 6'7" x 9'2"  
250x350 cm 8'2" x 11'6"  
custom sizes on request













# Decor | Proof

handtufted - pure new wool & viscose

total weight ca 4500 gr/m<sup>2</sup>

pile weight ca 2500 gr/m<sup>2</sup>

pile height ca 12 mm

available sizes:

140x200 cm 4'7" x 6'7"

160x230 cm 5'3" x 7'6"

200x280 cm 6'7" x 9'2"

250x350 cm 8'2" x 11'6"

custom sizes on request

Proof 095907





# Decor | Lola

handtufted - pure new wool

total weight ca 4500 gr/m<sup>2</sup>

pile weight ca 2500 gr/m<sup>2</sup>

pile height ca 12 mm

available sizes:

140x200 cm 4'7" x 6'7"

160x230 cm 5'3" x 7'6"

200x280 cm 6'7" x 9'2"

250x350 cm 8'2" x 11'6"

custom sizes on request

Lola 095403













# Decor | Scape

handtufted - pure new wool

total weight ca 4500 gr/m<sup>2</sup>

pile weight ca 2500 gr/m<sup>2</sup>

pile height ca 7-14 mm

available sizes:

140x200 cm 4'7" x 6'7"

160x230 cm 5'3" x 7'6"

200x280 cm 6'7" x 9'2"

250x350 cm 8'2" x 11'6"

custom sizes on request

Scape woolwhite 095001





# Decor | Miller spring & fall

handtufted - pure new wool

total weight ca 4500 gr/m<sup>2</sup>

pile weight ca 2500 gr/m<sup>2</sup>

pile height ca 12 mm

available sizes:

140x200 cm 4'7" x 6'7"

160x230 cm 5'3" x 7'6"

200x280 cm 6'7" x 9'2"

250x350 cm 8'2" x 11'6"

custom sizes on request

Miller spring 095108

Miller fall 095105













# Decor | Cosmo greens & red pale green

handtufted - pure new wool

total weight ca 4500 gr/m<sup>2</sup>

pile weight ca 2500 gr/m<sup>2</sup>

pile height ca 12 mm

available sizes:

140x200 cm 4'7" x 6'7"

160x230 cm 5'3" x 7'6"

200x280 cm 6'7" x 9'2"

250x350 cm 8'2" x 11'6"

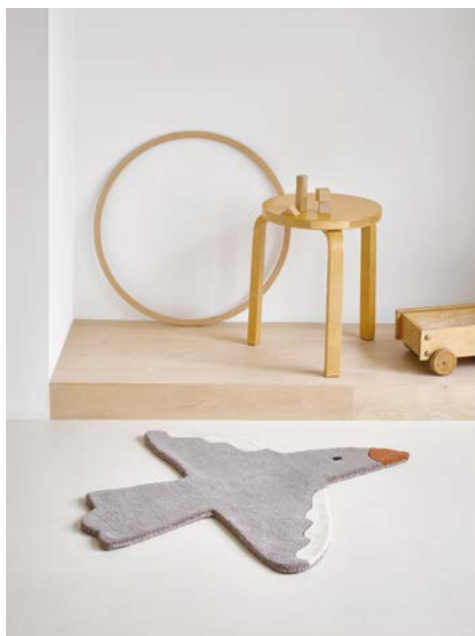
custom sizes on request





# Decor | B&C Kids

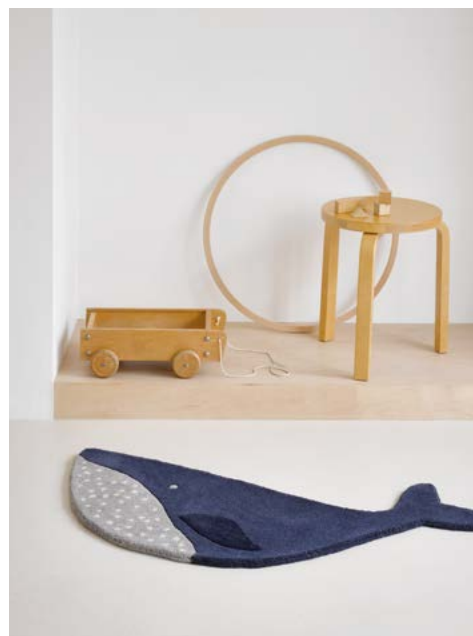
handtufted - pure new wool  
total weight ca 4500 gr/m2  
pile weight ca 2500 gr/m2  
pile height ca 12 mm



Bird 141201 | 90 x 80 cm



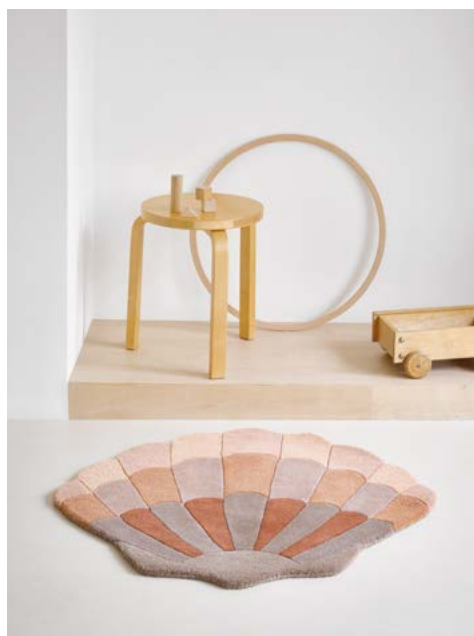
Lion 141403 | 80 cm round



Whale 141608 | 105 x 60 cm



72 Planet 141508 | 120 x 75 cm



Shell powder 141302 | 90 x 80 cm



Shell lilac 141308 | 90 x 80 cm



















# Arabiska

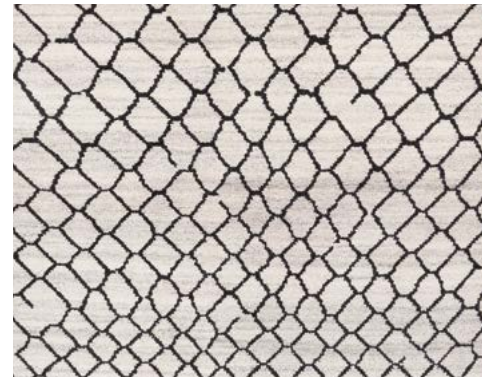
handknotted - pure new wool  
total weight ca 4000 gr/m<sup>2</sup>  
pile weight ca 3000 gr/m<sup>2</sup>  
no pile due to flatweave structure  
available sizes:  
140x200 cm 4'7" x 6'7"  
170x230 cm 5'7" x 7'6"  
200x300 cm 6'7" x 9'8"  
250x350 cm 8'2" x 11'6"  
custom sizes on request



Arabiska diamant 063101



Arabiska moroccan 063401



Arabiska hexacon 063501



Arabiska geometrisk 063301



Arabiska geometrisk 063305



Arabiska marakesh 063201 77



# Yara | Nomad

handknotted | super 60 - pure new wool

total weight ca 3800 gr/m<sup>2</sup>

pile weight ca 3200 gr/m<sup>2</sup>

pile height ca 5 mm

available sizes:

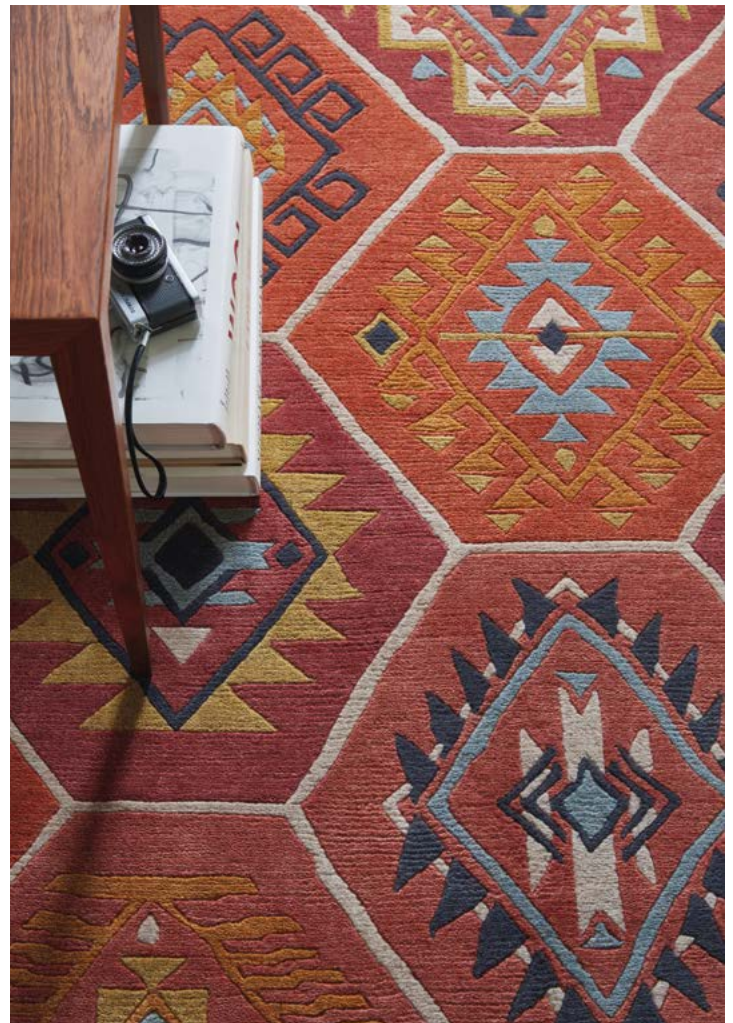
140x200 cm 4'7" x 6'7"

170x240 cm 5'7" x 7'10"

200x300 cm 6'7" x 9'8"

250x350 cm 8'2" x 11'6"

custom sizes on request













# Yara | Artdeco

handknotted | super 60 - pure new wool

total weight ca 3800 gr/m<sup>2</sup>

pile weight ca 3200 gr/m<sup>2</sup>

pile height ca 5 mm

available sizes:

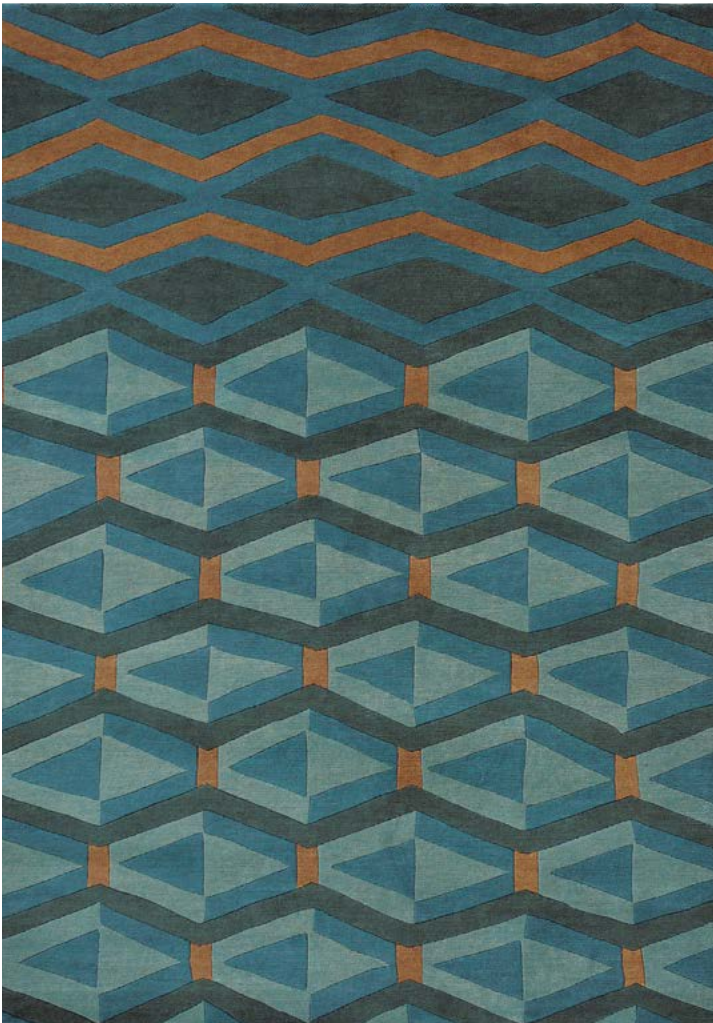
140x200 cm 4'7" x 6'7"

170x240 cm 5'7" x 7'10"

200x300 cm 6'7" x 9'8"

250x350 cm 8'2" x 11'6"

custom sizes on request





# Yeti | Avalanche & Summit

handknotted | 60 knots - pure new wool & viscose

total weight ca 4000 gr/m<sup>2</sup>

pile weight ca 3400 gr/m<sup>2</sup>

pile height ca 9 mm

available sizes:

140x200 cm 4'7" x 6'7"

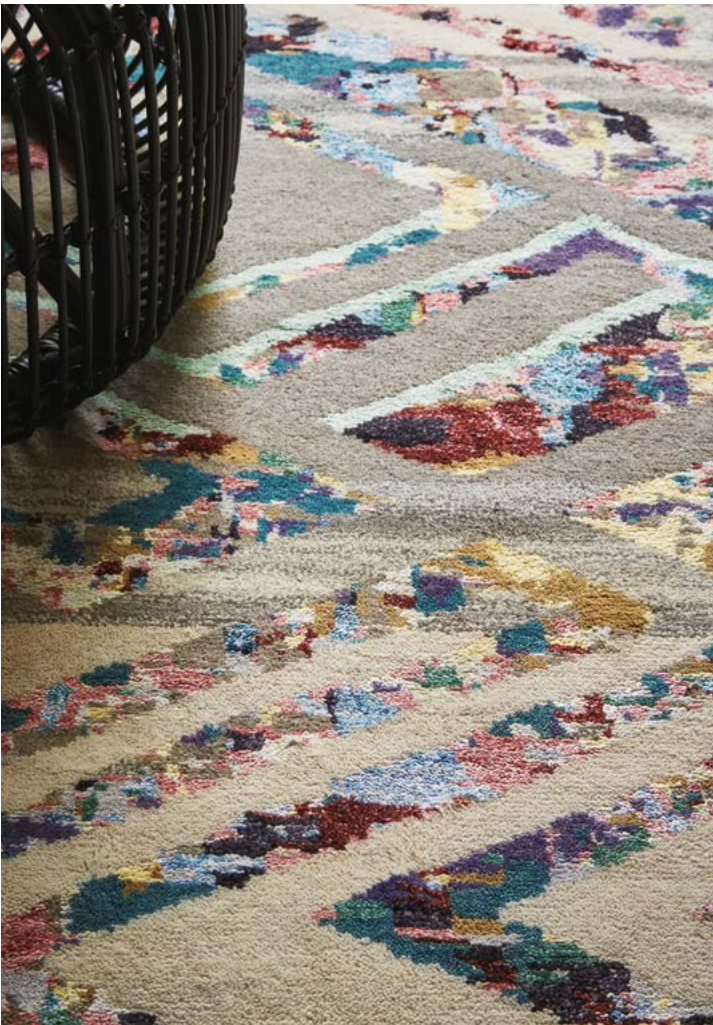
170x240 cm 5'7" x 7'10"

200x300 cm 6'7" x 9'8"

250x350 cm 8'2" x 11'6"

custom sizes on request

\* made out of recycled yarn scraps therefore  
colors may differ slightly













# Yeti | Anapurna

handknotted | 60 knots - pure new wool & viscose

total weight ca 4000 gr/m<sup>2</sup>

pile weight ca 3400 gr/m<sup>2</sup>

pile height ca 9 mm

available sizes:

140x200 cm 4'7" x 6'7"

170x240 cm 5'7" x 7'10"

200x300 cm 6'7" x 9'8"

250x350 cm 8'2" x 11'6"

custom sizes on request

\* made out of recycled yarn scraps therefore  
colors may differ slightly





# Kashba

handwoven - pure new wool  
total weight ca 1400 gr/m2  
pile weight ca 1100 gr/m2  
no pile due to flatweave structure  
available sizes:  
140x200 cm 4'7" x 6'7"  
160x230 cm 5'3" x 7'6"  
200x280 cm 6'7" x 9'2"  
100x300 cm 3'3" x 9'8"  
250x350 cm 8'2" x 11'6"



Stack 048507



Delight 48100



Stack 048500











# Kashba

handwoven - pure new wool  
total weight ca 1400 gr/m2  
pile weight ca 1100 gr/m2  
no pile due to flatweave structure  
available sizes:

140x200 cm 4'7" x 6'7"

160x230 cm 5'3" x 7'6"

200x280 cm 6'7" x 9'2"

250x350 cm 8'2" x 11'6"



Tipi 48907



Wigwam 048007



Wigwam 048005











# Estella

handtufted - pure new wool & viscose

total weight ca 4500 gr/m<sup>2</sup>

pile weight ca 2500 gr/m<sup>2</sup>

pile height ca 12 mm

available sizes:

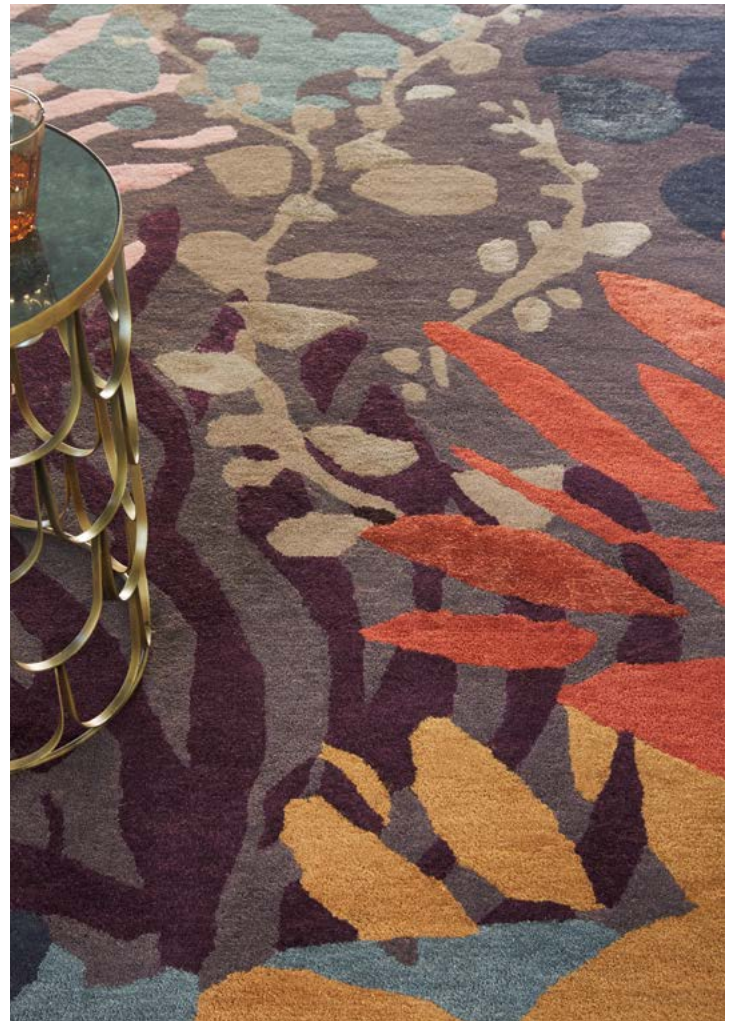
140x200 cm 4'7" x 6'7"

160x230 cm 5'3" x 7'6"

200x280 cm 6'7" x 9'2"

250x350 cm 8'2" x 11'6"

custom sizes on request













# Estella

handtufted - pure new wool  
total weight ca 4500 gr/m2  
pile weight ca 2500 gr/m2  
pile height ca 12 mm  
available sizes:  
140x200 cm 4'7" x 6'7"  
160x230 cm 5'3" x 7'6"  
200x280 cm 6'7" x 9'2"  
250x350 cm 8'2" x 11'6"  
custom sizes on request



Vases 089502



Domino 83901 95



# Estella

handtufted - pure new wool

total weight ca 4500 gr/m<sup>2</sup>

pile weight ca 2500 gr/m<sup>2</sup>

pile height ca 12 mm

available sizes:

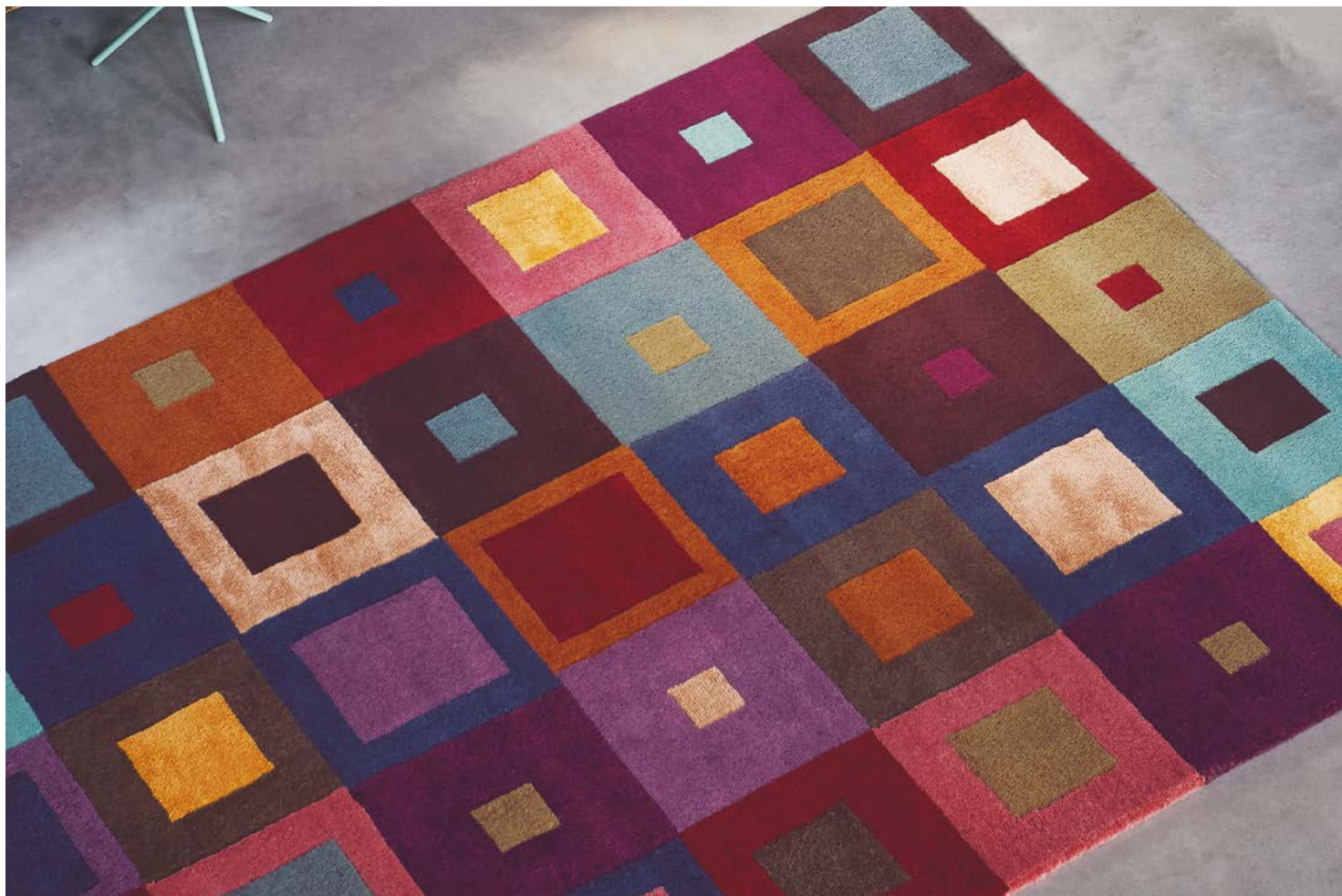
140x200 cm 4'7" x 6'7"

160x230 cm 5'3" x 7'6"

200x280 cm 6'7" x 9'2"

250x350 cm 8'2" x 11'6"

custom sizes on request













# Estella

handtufted - pure new wool & viscose

total weight ca 4500 gr/m<sup>2</sup>

pile weight ca 2500 gr/m<sup>2</sup>

pile height ca 12 mm

available sizes:

140x200 cm 4'7" x 6'7"

160x230 cm 5'3" x 7'6"

200x280 cm 6'7" x 9'2"

250x350 cm 8'2" x 11'6"

custom sizes on request





# Estella

handtufted - pure new wool

total weight ca 4500 gr/m<sup>2</sup>

pile weight ca 2500 gr/m<sup>2</sup>

pile height ca 12 mm

available sizes:

140x200 cm 4'7" x 6'7"

160x230 cm 5'3" x 7'6"

200x280 cm 6'7" x 9'2"

250x350 cm 8'2" x 11'6"

custom sizes on request



100 Moonlight 878305



Comic 875008



