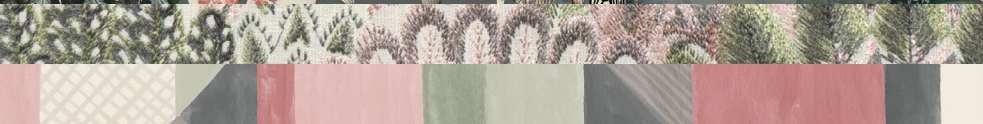


# CENTENARY

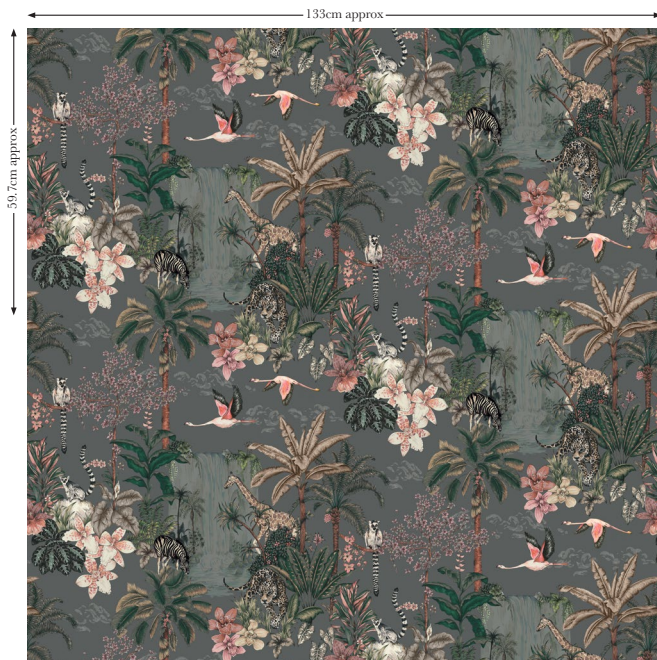
BLENDWORTH  
INTERIORS | EST. 1921



Pattern: **Kingdom**  
Pattern No: **CENKIN2110**  
Colour: **Dusk**  
Composition: 56% Cotton 44% Viscose  
Pattern Repeat: 59.7cm

Width: 133cm  
Care:      
Suitability:     +SRT  
Martindale: 40,000

*Chemical Treatment May Alter Colour*





Pattern: **Plume Embroidery**


Pattern No: **CENPLEZ124**

Colour: **Blush**

Composition: 48%Polyester 41% Viscose 7% Cotton 4% Linen

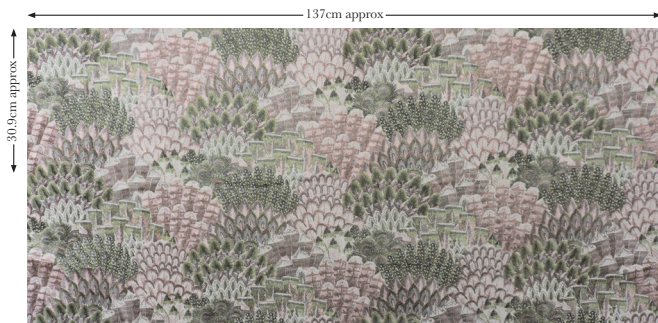
Pattern Repeat: 30.9cm

Width: 137cm

Care:   

Suitability:  

*Chemical Treatment May Alter Colour*





Pattern: **Ricochet**  
Pattern No: **CENRIC2131**  
Colour: **Rose**  
Composition: 64% Polyester 12% Linen 12%Viscose 12% Cotton  
Pattern Repeat: 62.8cm

Width: 138cm  
Care:     
Suitability:     +SRT  
Martindale: 26,000

***Chemical Treatment May Alter Colour***











Milford Blush

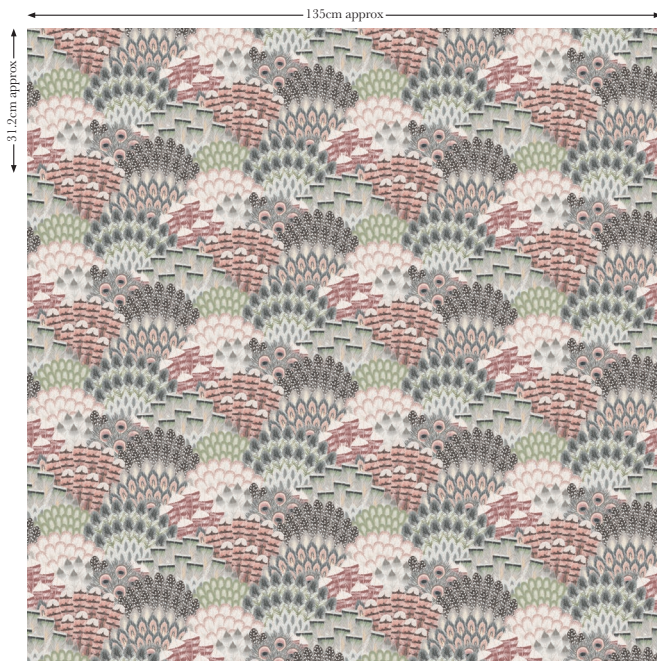


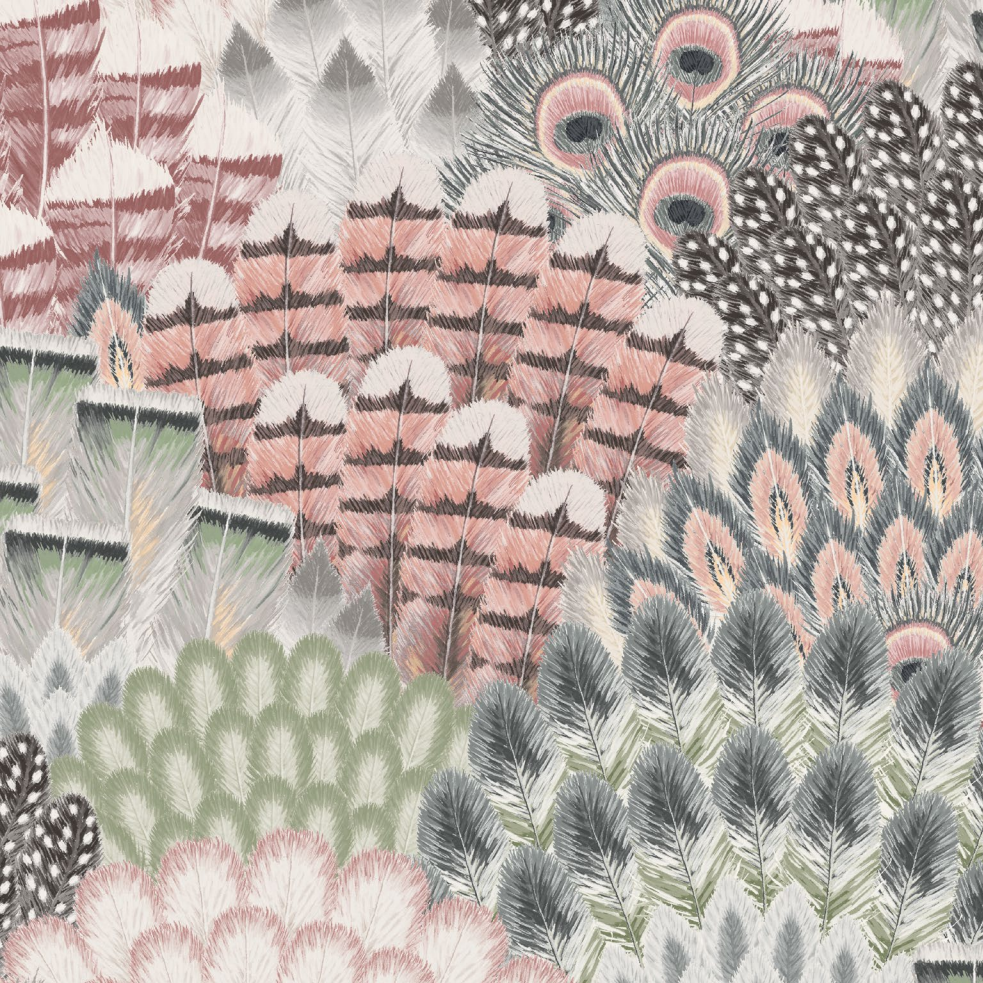
Milford Graphite

Pattern: **Plume**  
Pattern No: **CENPLU2122**  
Colour: **Sparrow**  
Composition: 70% Viscose 30% Linen  
Pattern Repeat: 31.2cm

Width: 135cm  
Care:     
Suitability:     +SRT  
Martindale: 26,000

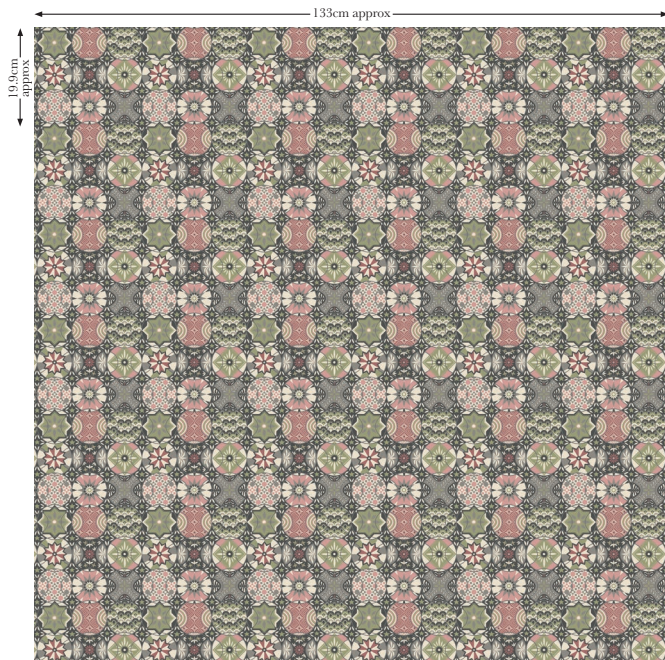
***Chemical Treatment May Alter Colour***





Pattern: **Camelot**  
Pattern No: **CENCAM2100**  
Colour: **Antique**  
Composition: 56% Cotton 44% Viscose  
Pattern Repeat: 19.9cm

Width: 133cm  
Care:     
Suitability:      +SRT  
Martindale: 40,000





Pattern: **Orchard**  
Pattern No: **CENORC2115**  
Colour: **Blossom**  
Composition: 70% Viscose 30% Linen  
Pattern Repeat: 44cm

Width: 135cm  
Care:      
Suitability:     +SRT  
Martindale: 26,000





Pattern: **Seedling**  
Pattern No: **CENSEE2134**  
Colour: **Dove**  
Composition: 70% Viscose 30% Linen  
Pattern Repeat: 30.9cm

Width: 135cm  
Care:   
Suitability:  +SRT  
Martindale: 26,000



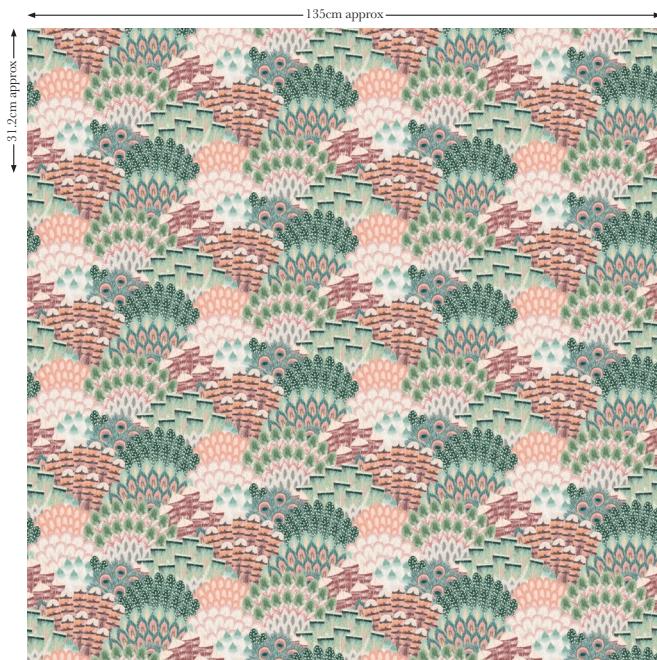




Pattern: **Plume**  
Pattern No: **CENPLU2121**  
Colour: **Serenade**  
Composition: 70% Viscose 30% Linen  
Pattern Repeat: 31.2cm

Width: 135cm  
Care:      
Suitability:     +SRT  
Martindale: 26,000

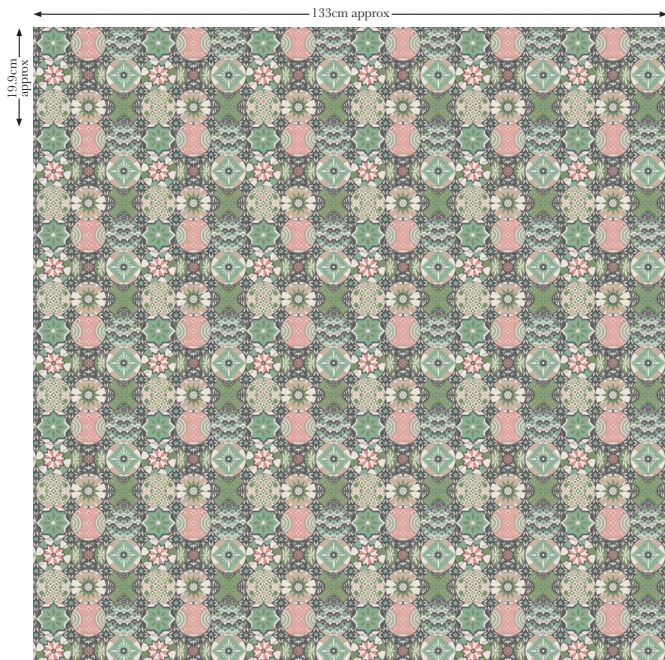
***Chemical Treatment May Alter Colour***

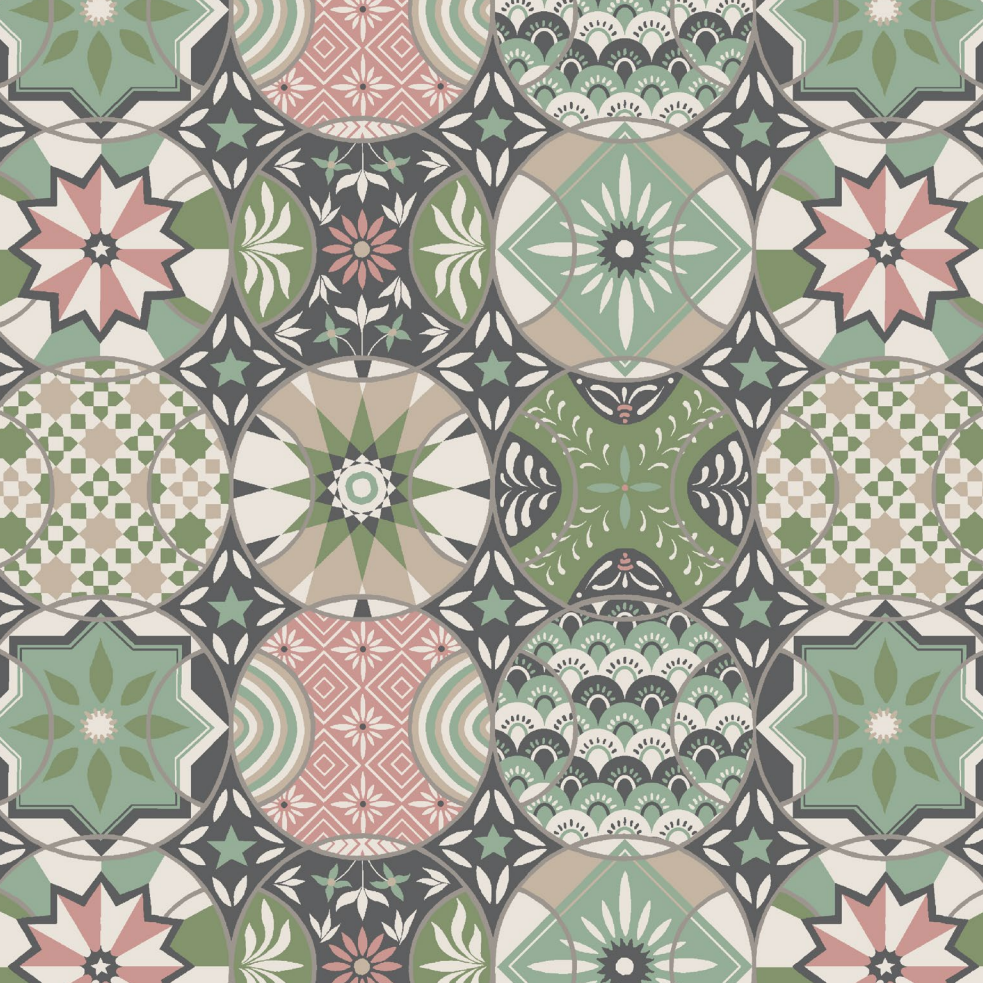




Pattern: **Camelot**  
Pattern No: **CENCAM2104**  
Colour: **Kiwi**  
Composition: 56% Cotton 44% Viscose  
Pattern Repeat: 19.9cm

Width: 133cm  
Care:      
Suitability:      +SRT  
Martindale: 40,000





Pattern: **Seedling**  
Pattern No: **CENSEE2133**  
Colour: **Arsenic**  
Composition: 70% Viscose 30% Linen  
Pattern Repeat: 30.9cm

Width: 135cm  
Care:      
Suitability:      +SRT  
Martindale: 26,000

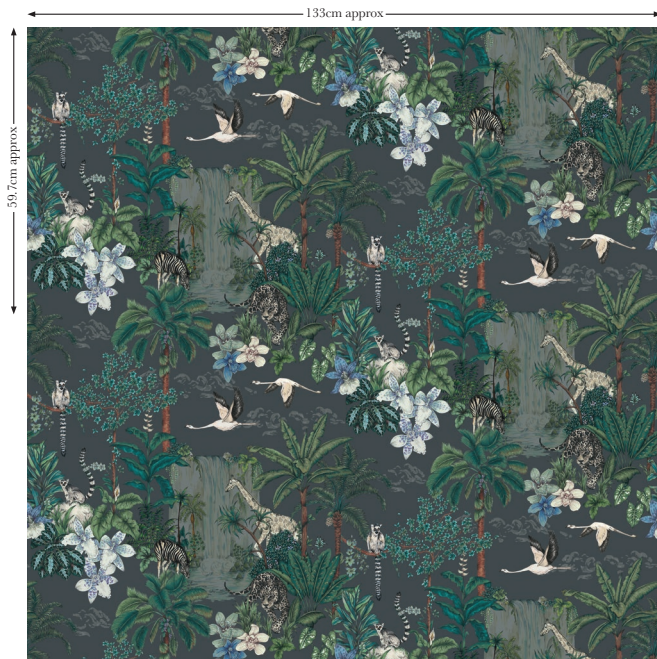




Pattern: **Kingdom**  
Pattern No: **CENKIN2113**  
Colour: **Sapphire**  
Composition: 56% Cotton 44% Viscose  
Pattern Repeat: 59.7cm

Width: 133cm  
Care:      
Suitability:      +SRT  
Martindale: 40,000

***Chemical Treatment May Alter Colour***

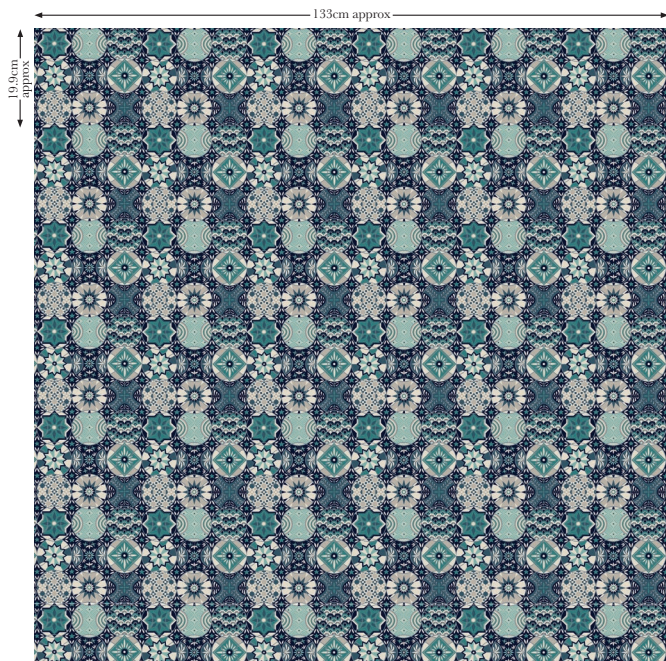






Pattern: **Camelot**  
Pattern No: **CENCAM2101**  
Colour: **Azure**  
Composition: 56% Cotton 44% Viscose  
Pattern Repeat: 19.9cm

Width: 133cm  
Care:     
Suitability:     +SRT  
Martindale: 40,000



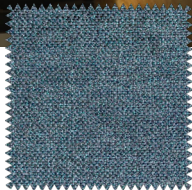




Hacienda 26



Tennyson Pebble



Holloway Mint

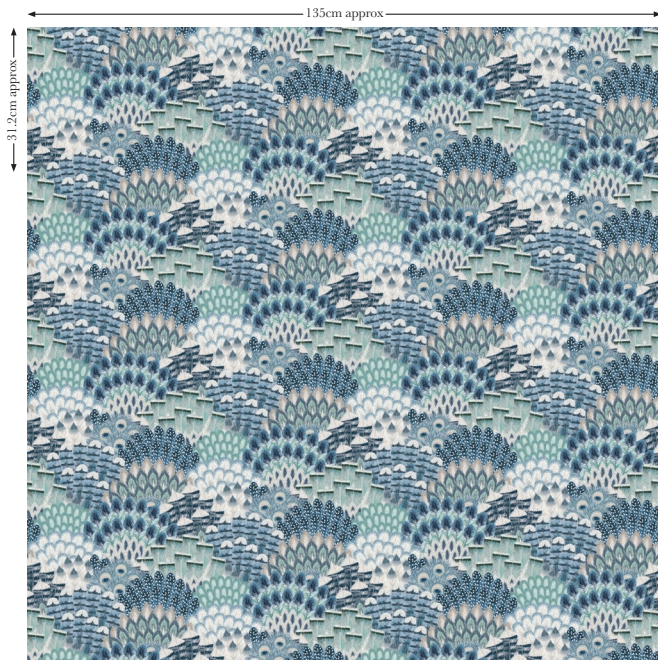




Pattern: **Plume**  
Pattern No: **CENPLU2118**  
Colour: **Bluebird**  
Composition: 70% Viscose 30% Linen  
Pattern Repeat: 31.2cm

Width: 135cm  
Care:     
Suitability:     +SRT  
Martindale: 26,000

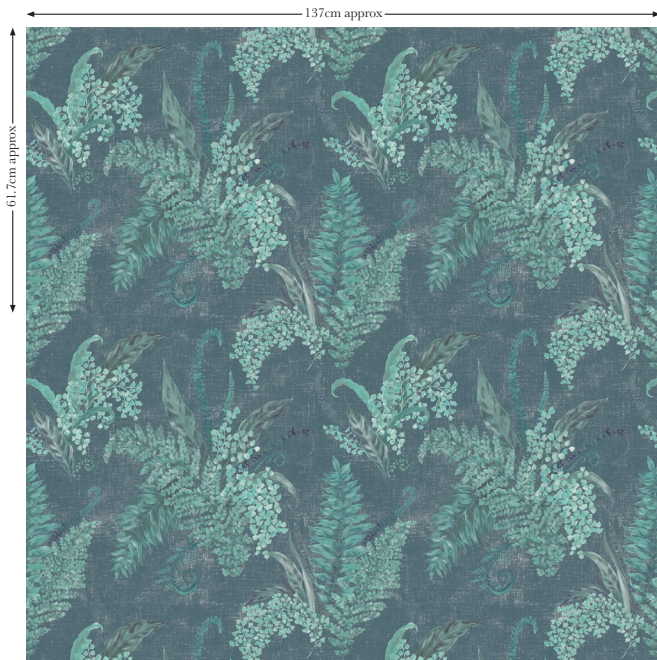
*Chemical Treatment May Alter Colour*





Pattern: **Eden**  
Pattern No: **CENEDE2106**  
Colour: **Cadet**  
Composition: 56% Cotton 44% Linen  
Pattern Repeat: 61.7cm

Width: 137cm  
Care:      
Suitability:      +SRT  
Martindale: 20,000







Pattern: **Ricochet**  
Pattern No: **CENRIC2132**  
Colour: **Spearmint**  
Composition: 64% Polyester 12% Linen 12%Viscose 12% Cotton  
Pattern Repeat: 62.8cm

Width: 138cm  
Care:     
Suitability:      +SRT  
Martindale: 26,000

*Chemical Treatment May Alter Colour*





Pattern: **Plume Embroidery**


Pattern No: **CENPLEZ125**


Colour: **Delft**

Composition: 48%Polyester 41% Viscose 7% Cotton 4% Linen

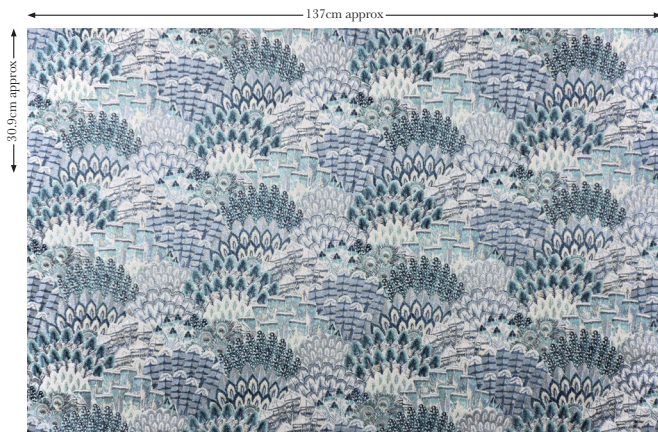
Pattern Repeat: 30.9cm

Width: 137cm

Care:   

Suitability:  

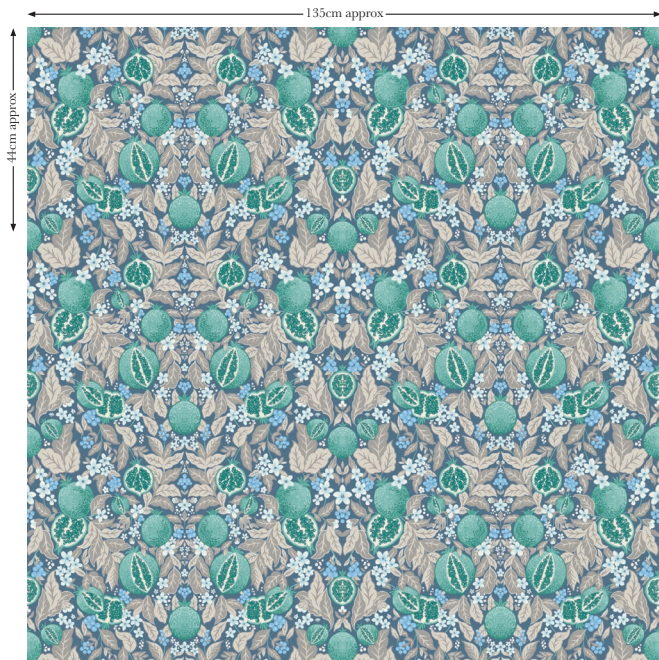
*Chemical Treatment May Alter Colour*





Pattern: **Orchard**  
Pattern No: **CENORC2117**  
Colour: **Winter**  
Composition: 70% Viscose 30% Linen  
Pattern Repeat: 44cm

Width: 135cm  
Care:      
Suitability:     +SRT  
Martindale: 26,000





Pattern: **Seedling**  
Pattern No: **CENSEE2135**  
Colour: **Marine**  
Composition: 70% Viscose 30% Linen  
Pattern Repeat: 30.9cm

Width: 135cm  
Care:   
Suitability:  +SRT  
Martindale: 26,000



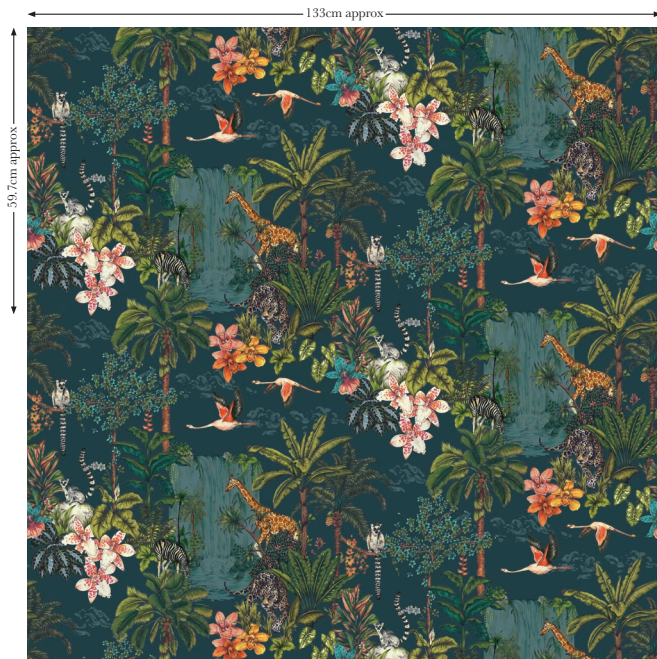




Pattern: **Kingdom**  
Pattern No: **CENKIN2112**  
Colour: **Royal**  
Composition: 56% Cotton 44% Viscose  
Pattern Repeat: 59.7cm

Width: 133cm  
Care:      
Suitability:     +SRT  
Martindale: 40,000

*Chemical Treatment May Alter Colour*





Pattern: **Plume**  
Pattern No: **CENPLU2120**  
Colour: **Peacock**  
Composition: 70% Viscose 30% Linen  
Pattern Repeat: 31.2cm

Width: 135cm  
Care:      
Suitability:     +SRT  
Martindale: 26,000

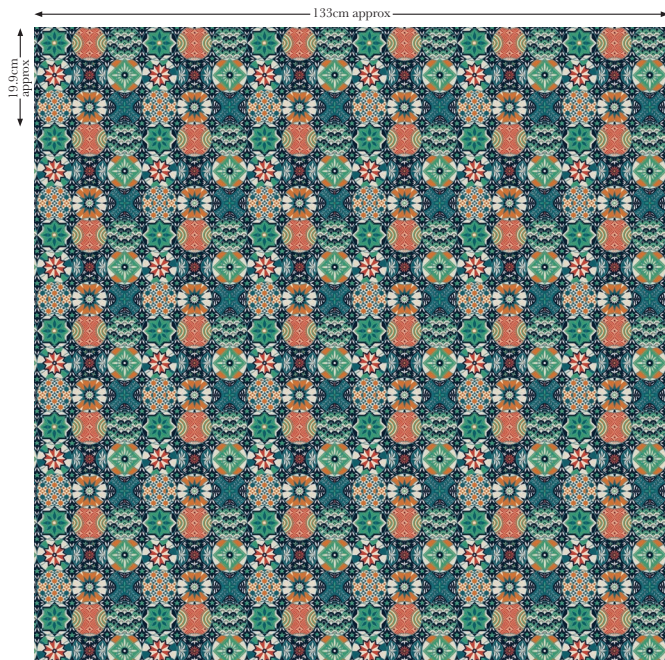
*Chemical Treatment May Alter Colour*





Pattern: **Camelot**  
Pattern No: **CENCAM2105**  
Colour: **Majorelle**  
Composition: 56% Cotton 44% Viscose  
Pattern Repeat: 19.9cm

Width: 133cm  
Care:     
Suitability:      +SRT  
Martindale: 40,000

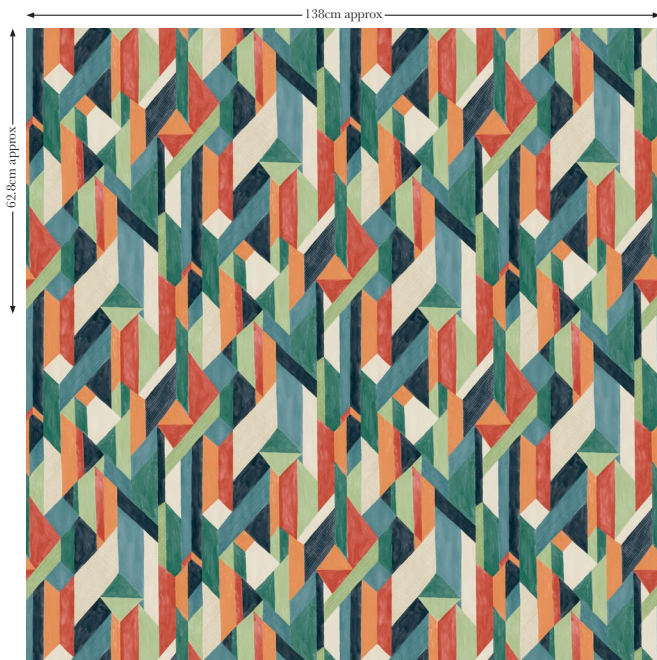




Pattern: **Ricochet**  
Pattern No: **CENRIC2129**  
Colour: **Mambo**  
Composition: 64% Polyester 12% Linen 12%Viscose 12% Cotton  
Pattern Repeat: 62.8cm

Width: 138cm  
Care:     
Suitability:     +SRT  
Martindale: 26000

*Chemical Treatment May Alter Colour*







Pattern: **Eden**  
Pattern No: **CENEDE2107**  
Colour: **Palm**  
Composition: 56% Cotton 44% Linen  
Pattern Repeat: 61.7cm

Width: 137cm  
Care:   
Suitability: +SRT  
Martindale: 20,000









Downton Pansy



Downton Marigold



Milford Crimson

Pattern: **Kingdom**  
Pattern No: **CENKIN2114**  
Colour: **Twilight**  
Composition: 56% Cotton 44% Viscose  
Pattern Repeat: 59.7cm

Width: 133cm  
Care:      
Suitability:     +SRT  
Martindale: 40,000

***Chemical Treatment May Alter Colour***





Pattern: **Plume Embroidery**


Pattern No: **CENPLEZ126**



Colour: **Jungle**

Composition: 48%Polyester 41% Viscose 7% Cotton 4% Linen

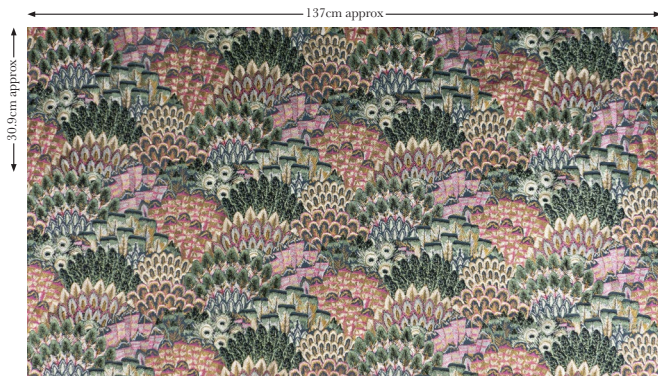
Pattern Repeat: 30.9cm

Width: 137cm

Care:   

Suitability:  

***Chemical Treatment May Alter Colour***







Pattern: **Ricochet**  
Pattern No: **CENRIC2130**  
Colour: **Prism**  
Composition: 64% Polyester 12% Linen 12%Viscose 12% Cotton  
Pattern Repeat: 62.8cm

Width: 138cm  
Care:     
Suitability:     +SRT  
Martindale: 26000

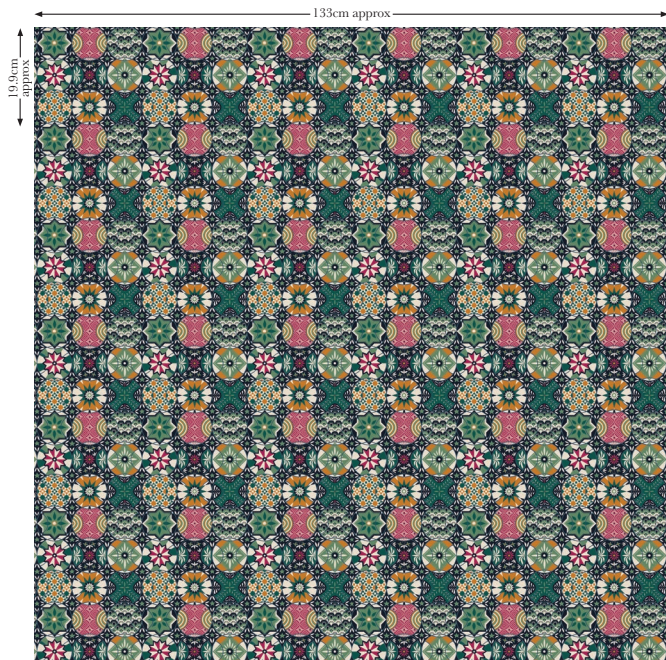
*Chemical Treatment May Alter Colour*





Pattern: **Camelot**  
Pattern No: **CENCAM2103**  
Colour: **Jewel**  
Composition: 56% Cotton 44% Viscose  
Pattern Repeat: 19.9cm

Width: 133cm  
Care:     
Suitability:     +SRT  
Martindale: 40,000





Pattern: **Plume**  
Pattern No: **CENPLU2119**  
Colour: **Orchid**  
Composition: 70% Viscose 30% Linen  
Pattern Repeat: 31.2cm

Width: 135cm  
Care:     
Suitability:     +SRT  
Martindale: 26,000

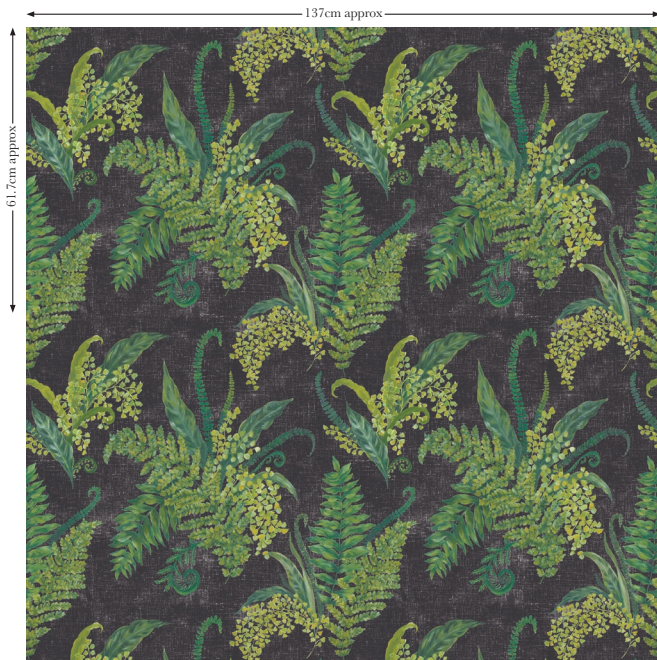
*Chemical Treatment May Alter Colour*





Pattern: **Eden**  
Pattern No: **CENEDE2109**  
Colour: **Tropic**  
Composition: 56% Cotton 44% Linen  
Pattern Repeat: 61.7cm

Width: 137cm  
Care:      
Suitability:      +SRT  
Martindale: 20,000







Pattern: **Orchard**  
Pattern No: **CENORC2116**  
Colour: **Pomegranate**  
Composition: 70% Viscose 30% Linen  
Pattern Repeat: 44cm

Width: 135cm  
Care:   
Suitability: +SRT  
Martindale: 26,000









Downton Vine



Downton Lantana



Pattern: **Kingdom**  
Pattern No: **CENKIN2111**  
Colour: **Havana**  
Composition: 56% Cotton 44% Viscose  
Pattern Repeat: 59.7cm

Width: 133cm  
Care:      
Suitability:      +SRT  
Martindale: 40,000

***Chemical Treatment May Alter Colour***





Pattern: **Plume Embroidery**


Pattern No: **CENPLEZ127**

Colour: **Macaw**

Composition: 48%Polyester 41% Viscose 7% Cotton 4% Linen

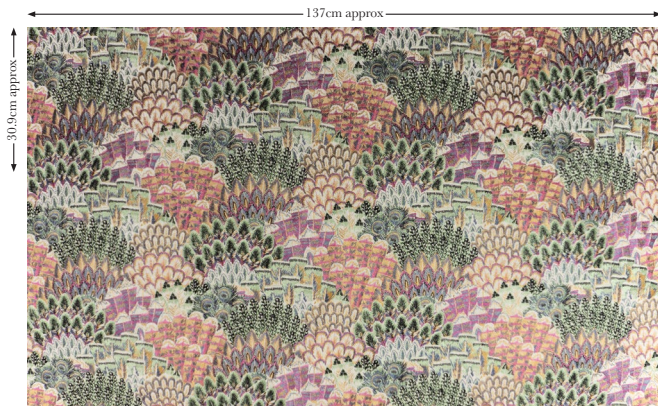
Pattern Repeat: 30.9cm

Width: 137cm

Care:   

Suitability:  

*Chemical Treatment May Alter Colour*







Pattern: **Ricochet**  
Pattern No: **CENRIC2128**  
Colour: **Earth**  
Composition: 64% Polyester 12% Linen 12%Viscose 12% Cotton  
Pattern Repeat: 62.8cm

Width: 138cm  
Care:     
Suitability:     +SRT  
Martindale: 26,000

*Chemical Treatment May Alter Colour*





Pattern: **Camelot**  
Pattern No: **CENCAM2102**  
Colour: **Cocktail**  
Composition: 56% Cotton 44% Viscose  
Pattern Repeat: 19.9cm

Width: 133cm  
Care:     
Suitability:      +SRT  
Martindale: 40,000





Pattern: **Plume**  
Pattern No: **CENPLU2123**  
Colour: **Treasure**  
Composition: 70% Viscose 30% Linen  
Pattern Repeat: 31.2cm

Width: 135cm  
Care:     
Suitability:     +SRT  
Martindale: 26,000

***Chemical Treatment May Alter Colour***





Pattern: **Eden**  
Pattern No: **CENEDE2108**  
Colour: **Rust**  
Composition: 56% Cotton 44% Linen  
Pattern Repeat: 61.7cm

Width: 137cm  
Care:      
Suitability:      +SRT  
Martindale: 20,000







# BLENDWORTH

INTERIORS | EST. 1921

## CENTENARY

Established in 1921, Blendworth celebrates its 100th year in business this year! To commemorate this momentous occasion, our Studio have created a collection of prints and embroideries inspired by iconic Blendworth designs and styles throughout our 100 years.

The Centenary collection celebrates the eclectic, boasting a vast array of hand-drawn and painted designs from luxurious exotic toiles and bountiful botanicals to intricately executed feather embroideries and textured geometrics. Each design has been printed on a diverse range of base cloths including sumptuous velvets and natural linen mixes, all embracing a rich and sophisticated colour palette.



Curtains



Contract Curtains

If chemically treated  
to meet BS5852  
Part 2 type A or B  
BS5852 Part 2.



Severe Contract

Fabric must be chemically FR treated (ICRB 5)



Domestic Upholstery

Fabric must be either  
A. Chemically treated to meet ignition source D-4 (BS5852 Part 1)  
or  
B. Used in conjunction with an FR interliner (That meets Schedule 3  
BS5852 Part 2)



Bedcovers



Contract Bedcovers

If chemically treated  
to meet BS1376 section 3  
ignition sources D, 1 + 5



General Domestic

Chemise/Velvets  
Subject to parameters for this type of fabric - see Product Care in price list. Fabric must be chemically treated.



Stain Repellent Treatment

This fabric is suitable for Stain repellent treatment

If any of the above treatments are required please specify END USE when ordering your fabric e.g. General Domestic Upholstery.

Shades may vary from batch to batch. If an exact colour match is required please request a stock cutting.

Please allow 5% for fabric shrinkage.

Chemical Treatment may slightly alter colour.

Photography for illustration purposes only, please order a sample for colour reference.

